



HONEYCELL COMPANION

honeycell®

INSPIRED BY NATURE

Index

Honeycell® Companion

Introduction	4 - 5		
Modern elements	7	Classic luxury	50
Palma	8 - 9	Baltimore	51
Palma BO	10 - 11	Oklahoma	52 - 53
Rioja	12 - 13	Oklahoma BO	54 - 55
Rioja BO	14 - 15	Edmonton	56 - 57
Montreal	16 - 17	Yukon	58 - 59
Montreal BO	18 - 19		
Pittsburgh	20 - 21		
Pittsburgh BO	22 - 23		
Vernon	24 - 25		
Windsor	26 - 27	Function	61
Windsor BO	28 - 29		
Milton	30 - 31	Palma 20 mm	62
Milton BO	32 - 33	Palma BO 20 mm	63
Halifax	34 - 35	Pittsburgh 20 mm	64
Halifax BO	36 - 37	Pittsburgh BO 20 mm	65
		Atlanta FR	66 - 67
		Atlanta FR BO	68 - 69
Rustic nature	38		
Oxford	39	Explanation technical specifications	70
Hamilton	40		
Ohio	41		
Hudson	42 - 43		
Milwaukee	44		
Burlington	45		
Burlington BO	46		
Alicante	47	General maintenance instructions	71
Dawson	48 - 49		



Introduction

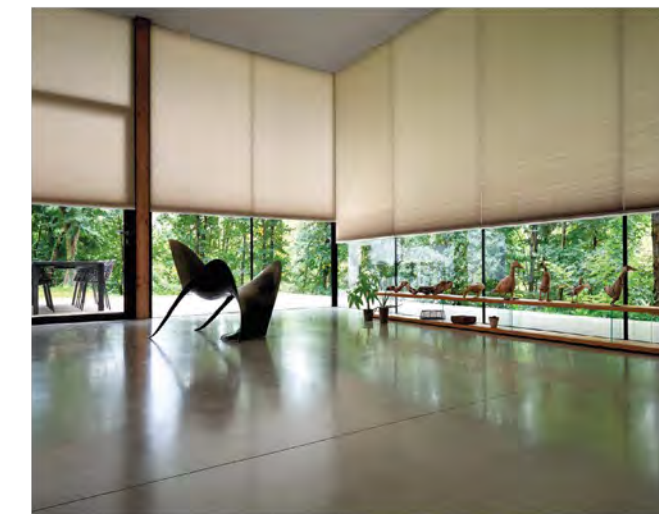
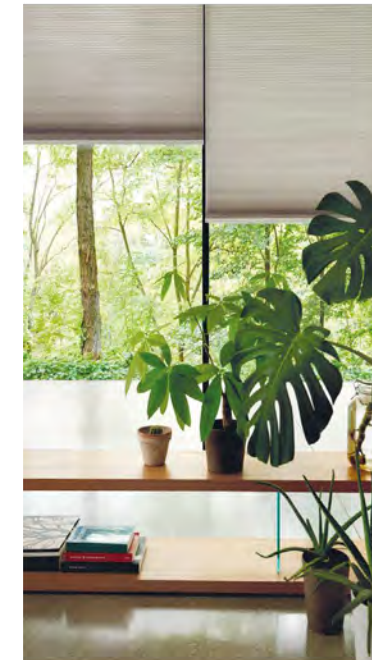
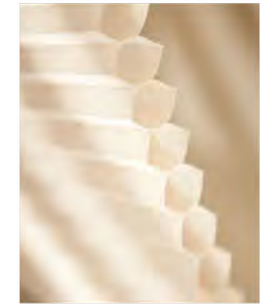
DESIGNED IN THE NETHERLANDS & INSPIRED BY NATURE

We are proud to present our new collection of top quality honeycomb fabrics in a wide range of qualities, colours and prints. Designed in The Netherlands and Inspired by Nature go hand-in-hand in this new and exciting collection. Because preferences, function and tastes differ, the Honeycell collection is presented in 4 styles: Modern Elements, Rustic Nature, Classic Luxury and Function, allowing you to choose the right fabric and colour for the right purpose and room.

INSPIRED BY NATURE

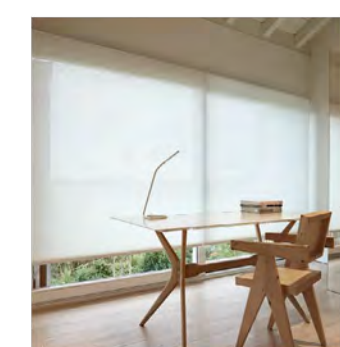
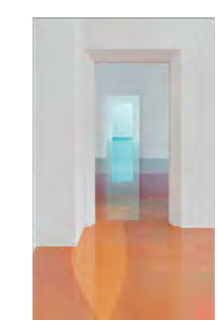


Over the course of 3.8 million years, nature has created designs that are perfectly suited to their purpose. By taking nature as our inspiration, we can create designs that optimally suit their intended function. The honeycomb-structure bees use to store their honey in, is all about efficiency and stability and is the source of inspiration for our Honeycell fabrics.



MODERN ELEMENTS

This trendy collection of Honeycell fabrics is inspired by elements of today's modern world. The delicate plain fabrics create an elegant atmosphere, while the playful patterns of the printed fabrics are trendy and fashionable. The collection offers a wide range of colours, varying from soft light colours to stylish bright colour tones.





Palma 25 mm

The insulating honeycomb structure combined with a reflecting white backside makes Palma an essential article for every functional collection. This non-woven Honeycell fabric is offered in a width of 300 cm. It makes Palma ideal for larger windows; even with larger dimensions the fabric folds into a thin stack. The 25 mm variety is available in no less than 36 colours.

fabric specifications

composition	construction	transparency	form of cell	cell size	weight (g/m ²)	thick-ness (mm)	colour fastness (ISO 105 B02)	metalized	Oeko-Tex standard 100	flame retardant	moisture resistant	pvc/halogen free
100% PES	pointbonded non-woven fabric	semi-transparent	D-shape	25 mm 45 mm	144	0,21	4-5	no	yes	no	yes	yes

solar heat and light control properties

design	colour	cell size (mm)	fabric width (cm)	Rv	Av	Tv	Rs	As	Ts	Tuv	g _{tot} value	Fc-value	FC-class
7410	snow white	25 / 45 mm	300	54%	12%	34%	51%	14%	35%	7%	0,44	0,63	3
7411	pearl	25 mm	300	55%	14%	31%	53%	15%	32%	5%	0,44	0,62	3
7412	cream	25 mm	300	55%	14%	31%	53%	15%	32%	5%	0,44	0,62	3
7413	sand	25 mm	300	55%	14%	31%	53%	15%	32%	5%	0,44	0,62	3
7414	camel	25 / 45 mm	300	53%	24%	23%	52%	21%	27%	4%	0,44	0,62	3
7415	dune	25 mm	300	53%	24%	23%	52%	21%	27%	4%	0,44	0,62	3
7416	dawn	25 / 45 mm	300	55%	14%	31%	53%	15%	32%	5%	0,44	0,62	3
7417	ash	25 / 45 mm	300	48%	35%	17%	50%	24%	26%	4%	0,44	0,63	3
7418	coffee	25 mm	300	31%	59%	10%	31%	55%	14%	5%	0,52	0,74	3
7419	espresso	25 / 45 mm	300	31%	59%	10%	31%	55%	14%	5%	0,52	0,74	3
7420	raven	25 mm	300	31%	59%	10%	31%	55%	14%	5%	0,52	0,74	3
7421	iron	25 / 45 mm	300	31%	59%	10%	31%	55%	14%	5%	0,52	0,74	3
7422	steel	25 mm	300	48%	35%	17%	50%	24%	26%	4%	0,44	0,63	3
7423	mouse	25 / 45 mm	300	53%	24%	23%	52%	21%	27%	4%	0,44	0,62	3
7424	cloud	25 / 45 mm	300	55%	14%	31%	53%	15%	32%	5%	0,44	0,62	3
7425	ocean	25 mm	300	40%	44%	16%	44%	29%	27%	6%	0,47	0,67	3
7426	malibu	25 mm	300	40%	44%	16%	44%	29%	27%	6%	0,47	0,67	3
7427	jeans	25 mm	300	40%	44%	16%	44%	29%	27%	6%	0,47	0,67	3
7428	eclipse	25 mm	300	31%	59%	10%	31%	55%	14%	5%	0,52	0,74	3
7429	aubergine	25 mm	300	31%	59%	10%	31%	55%	14%	5%	0,52	0,74	3
7430	coral	25 mm	300	39%	39%	22%	44%	22%	34%	9%	0,47	0,68	3
7433	flame	25 / 45 mm	300	39%	39%	22%	44%	22%	34%	9%	0,47	0,68	3
7434	jaffa	25 / 45 mm	300	48%	35%	17%	50%	24%	26%	4%	0,44	0,63	3
7435	apricot	25 mm	300	53%	24%	23%	52%	21%	27%	4%	0,44	0,62	3
7436	yellow	25 mm	300	48%	35%	17%	50%	24%	26%	4%	0,44	0,63	3
7437	melon	25 / 45 mm	300	53%	24%	23%	52%	21%	27%	4%	0,44	0,62	3
7438	essence	25 / 45 mm	300	55%	14%	31%	53%	15%	32%	5%	0,44	0,62	3
7439	citron	25 mm	300	48%	35%	17%	50%	24%	26%	4%	0,44	0,63	3
7440	lime	25 mm	300	40%	44%	16%	44%	29%	27%	6%	0,47	0,67	3
7441	grass	25 mm	300	40%	44%	16%	44%	29%	27%	6%	0,47	0,67	3
741-01	off-white	25 mm	300	61%	5%	34%	57%	8%	35%	7%	0,42	0,59	3
741-02	mist	25 mm	300	54%	17%	29%	53%	14%	33%	8%	0,43	0,62	3
741-03	mint	25 mm	300	55%	15%	30%	53%	14%	33%	8%	0,43	0,62	3
741-04	grain	25 mm	300	56%	20%	24%	55%	16%	29%	6%	0,42	0,61	3
741-05	pebble	25 mm	300	54%	19%	27%	52%	19%	29%	9%	0,44	0,62	3
741-06	dust	25 mm	300	51%	33%	16%	49%	32%	19%	6%	0,44	0,63	3





Palma B0 25 mm

The insulating honeycomb structure combined with a reflecting white backside makes 100% blackout fabric Palma B0 an essential article for every functional collection. The insulating quality of this non-woven fabric is enhanced by the silver coating on the inside of the cells. This 25 mm single-cell variety is available in a width of no less than 300 cm. It makes the fabric ideal for larger windows; even with larger dimensions the fabric folds into a thin stack. The 25 mm variety is available in no less than 36 inspiring colours.

fabric specifications

composition	construction	transparency	form of cell	cell size	weight (g/m ²)	thick-ness (mm)	colour fastness (ISO 105 B02)	metalized	Oeko-Tex standard 100	flame retardant	moisture resistant	pvc/halogen free
100% PES	pointbonded non-woven film-laminated fabric	black-out	D-shape	25 mm	169	0,18	4-5	yes	yes	no	yes	yes
				45 mm	208	0,21						

solar heat and light control properties

design	colour	cell size (mm)	fabric width (cm)	Rv	Av	Tv	Rs	As	Ts	Tuv	g _{tot} value	Fc-value	FC-class
7460	snow white	25 / 45 mm	300	71%	29%	0%	70%	30%	0%	0%	0,34	0,49	2
7461	pearl	25 mm	300	71%	29%	0%	70%	30%	0%	0%	0,34	0,49	2
7462	cream	25 mm	300	71%	29%	0%	70%	30%	0%	0%	0,34	0,49	2
7463	sand	25 mm	300	71%	29%	0%	70%	30%	0%	0%	0,34	0,49	2
7464	camel	25 / 45 mm	300	71%	29%	0%	70%	30%	0%	0%	0,34	0,49	2
7465	dune	25 mm	300	71%	29%	0%	70%	30%	0%	0%	0,34	0,49	2
7466	dawn	25 / 45 mm	300	71%	29%	0%	70%	30%	0%	0%	0,34	0,49	2
7467	ash	25 / 45 mm	300	71%	29%	0%	70%	30%	0%	0%	0,34	0,49	2
7468	coffee	25 mm	300	71%	29%	0%	70%	30%	0%	0%	0,34	0,49	2
7470	raven	25 mm	300	71%	29%	0%	70%	30%	0%	0%	0,34	0,49	2
7471	iron	25 / 45 mm	300	71%	29%	0%	70%	30%	0%	0%	0,34	0,49	2
7472	steel	25 mm	300	71%	29%	0%	70%	30%	0%	0%	0,34	0,49	2
7473	mouse	25 / 45 mm	300	71%	29%	0%	70%	30%	0%	0%	0,34	0,49	2
7474	cloud	25 / 45 mm	300	71%	29%	0%	70%	30%	0%	0%	0,34	0,49	2
7475	ocean	25 mm	300	71%	29%	0%	70%	30%	0%	0%	0,34	0,49	2
7476	malibu	25 mm	300	71%	29%	0%	70%	30%	0%	0%	0,34	0,49	2
7477	jeans	25 mm	300	71%	29%	0%	70%	30%	0%	0%	0,34	0,49	2
7478	eclipse	25 mm	300	71%	29%	0%	70%	30%	0%	0%	0,34	0,49	2
7479	aubergine	25 mm	300	71%	29%	0%	70%	30%	0%	0%	0,34	0,49	2
7480	coral	25 mm	300	71%	29%	0%	70%	30%	0%	0%	0,34	0,49	2
7483	flame	25 / 45 mm	300	71%	29%	0%	70%	30%	0%	0%	0,34	0,49	2
7484	jaffa	25 / 45 mm	300	71%	29%	0%	70%	30%	0%	0%	0,34	0,49	2
7485	apricot	25 mm	300	71%	29%	0%	70%	30%	0%	0%	0,34	0,49	2
7486	yellow	25 mm	300	71%	29%	0%	70%	30%	0%	0%	0,34	0,49	2
7487	melon	25 / 45 mm	300	71%	29%	0%	70%	30%	0%	0%	0,34	0,49	2
7488	essence	25 / 45 mm	300	71%	29%	0%	70%	30%	0%	0%	0,34	0,49	2
7489	citron	25 mm	300	71%	29%	0%	70%	30%	0%	0%	0,34	0,49	2
7490	lime	25 mm	300	71%	29%	0%	70%	30%	0%	0%	0,34	0,49	2
7491	grass	25 mm	300	71%	29%	0%	70%	30%	0%	0%	0,34	0,49	2
7493	lipstick	25 mm	300	71%	29%	0%	70%	30%	0%	0%	0,34	0,49	2
746-01	mint	25 mm	300	71%	29%	0%	70%	30%	0%	0%	0,34	0,49	2
746-02	grain	25 mm	300	71%	29%	0%	70%	30%	0%	0%	0,34	0,49	2
746-03	pebble	25 mm	300	71%	29%	0%	70%	30%	0%	0%	0,34	0,49	2
746-04	ash rose	25 mm	300	71%	29%	0%	70%	30%	0%	0%	0,34	0,49	2
746-05	concrete	25 mm	300	71%	29%	0%	70%	30%	0%	0%	0,34	0,49	2
746-06	indigo	25 mm	300	71%	29%	0%	70%	30%	0%	0%	0,34	0,49	2





Rioja 25 mm

Semi-transparent Honeycell fabric Rioja is the perfect choice when maximum functionality is required. Due to the honeycomb structure, this non-woven fabric has excellent insulating properties ensuring the heat to stay outside during summer and inside during winter. Rioja is available in eighteen colours.

fabric specifications

composition	construction	transparency	form of cell	cell size	weight (g/m ²)	thick-ness (mm)	colour fastness (ISO 105 B02)	metalized	Oeko-Tex standard 100	flame retardant	moisture resistant	pvc/halogen free
100% PES	spunlace non-woven fabric	semi-transparent	D-shape	25 mm	164	0,24	4-5	no	yes	no	yes	yes
				45 mm	160	0,29						

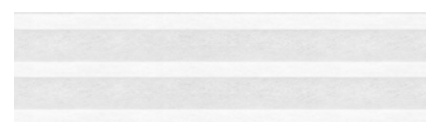
solar heat and light control properties

design	colour	cell size (mm)	fabric width (cm)	Rv	Av	Tv	Rs	As	Ts	Tuv	gtot value	Fc-value	FC-class
7720	white	25 / 45 mm	300	61%	8%	31%	61%	7%	32%	-	0,40	0,57	2
7721	pearl	25 / 45 mm	300	68%	12%	20%	67%	12%	21%	-	0,36	0,52	2
7722	sand	25 / 45 mm	300	68%	12%	20%	67%	12%	21%	-	0,36	0,52	2
7723	camel	25 / 45 mm	300	68%	12%	20%	67%	12%	21%	-	0,36	0,52	2
7724	dune	25 / 45 mm	300	62%	21%	17%	62%	17%	21%	-	0,39	0,55	2
7725	dawn	25 / 45 mm	300	62%	21%	17%	62%	17%	21%	-	0,39	0,55	2
7727	espresso	25 / 45 mm	300	60%	34%	6%	60%	33%	7%	-	0,39	0,56	2
7728	mouse	25 / 45 mm	300	62%	21%	17%	62%	17%	21%	-	0,39	0,55	2
7729	eclipse	25 / 45 mm	300	60%	34%	6%	60%	33%	7%	-	0,39	0,56	2
7731	coral	25 / 45 mm	300	64%	16%	20%	64%	13%	23%	-	0,38	0,54	2
7732	yellow	25 / 45 mm	300	64%	16%	20%	64%	13%	23%	-	0,38	0,54	2
7733	essence	25 / 45 mm	300	68%	12%	20%	67%	12%	21%	-	0,36	0,52	2
7734	lime	25 / 45 mm	300	64%	16%	20%	64%	13%	23%	-	0,38	0,54	2
772-01	off-white	25 mm	300	74%	5%	21%	73%	5%	22%	14%	0,34	0,49	2
772-02	shell	25 mm	300	73%	6%	21%	72%	6%	22%	14%	0,34	0,49	2
772-03	grain	25 mm	300	68%	20%	12%	66%	20%	14%	6%	0,36	0,52	2
772-04	dust	25 mm	300	66%	23%	11%	67%	15%	18%	8%	0,36	0,52	2
772-05	bark	25 mm	300	69%	21%	10%	69%	14%	17%	7%	0,35	0,50	2

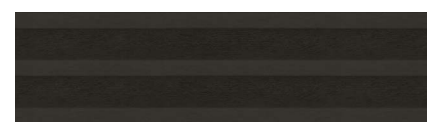




7762



7750



7757



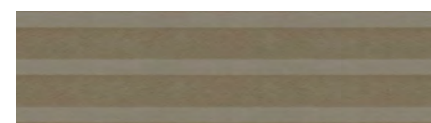
7764



7751



7758



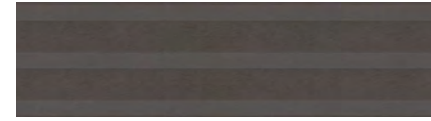
775-01



7752



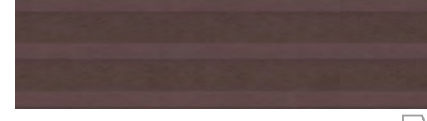
7759



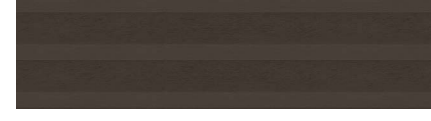
775-02



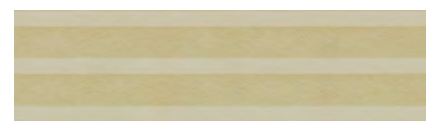
7753



7760



775-03



7754



7761



7755



7763



Rioja B0 25 mm

Black-out Honeycell fabric Rioja B0 is the perfect choice when maximum functionality is required. This non-woven fabric does not only have a blackout effect, but because of the silver coating on the inside of the cells an optimal insulating effect as well. This effect is even enhanced by the white reflecting backside of the fabric. Rioja B0 is available in a 25 mm and 45 mm variety. Rioja B0 is available in seventeen colours.

fabric specifications

composition	construction	transparency	form of cell	cell size	weight (g/m ²)	thick-ness (mm)	colour fastness (ISO 105 B02)	metalized	Oeko-Tex standard 100	flame retardant	moisture resistant	pvc/halogen free
100% PES	spunlace non-woven film-laminated fabric	black-out	D-shape	25 mm	191	0,15	4-5	yes	yes	no	yes	yes
				45 mm	192	0,19						

solar heat and light control properties

design	colour	cell size (mm)	fabric width (cm)	Rv	Av	Tv	Rs	As	Ts	Tuv	g _{tot} value	Fc-value	FC-class
7750	white	25 / 45 mm	300	72%	28%	0%	70%	30%	0%	0%	0,34	0,48	2
7751	pearl	25 / 45 mm	300	72%	28%	0%	70%	30%	0%	0%	0,34	0,48	2
7752	sand	25 / 45 mm	300	72%	28%	0%	70%	30%	0%	0%	0,34	0,48	2
7753	camel	25 / 45 mm	300	72%	28%	0%	70%	30%	0%	0%	0,34	0,48	2
7754	dune	25 / 45 mm	300	72%	28%	0%	70%	30%	0%	0%	0,34	0,48	2
7755	dawn	25 / 45 mm	300	72%	28%	0%	70%	30%	0%	0%	0,34	0,48	2
7757	espresso	25 / 45 mm	300	72%	28%	0%	70%	30%	0%	0%	0,34	0,48	2
7758	mouse	25 / 45 mm	300	72%	28%	0%	70%	30%	0%	0%	0,34	0,48	2
7759	eclipse	25 / 45 mm	300	72%	28%	0%	70%	30%	0%	0%	0,34	0,48	2
7760	aubergine	25 / 45 mm	300	72%	28%	0%	70%	30%	0%	0%	0,34	0,48	2
7761	coral	25 / 45 mm	300	72%	28%	0%	70%	30%	0%	0%	0,34	0,48	2
7762	yellow	25 / 45 mm	300	72%	28%	0%	70%	30%	0%	0%	0,34	0,48	2
7763	essence	25 / 45 mm	300	72%	28%	0%	70%	30%	0%	0%	0,34	0,48	2
7764	lime	25 / 45 mm	300	72%	28%	0%	70%	30%	0%	0%	0,34	0,48	2
775-01	bark	25 mm	300	72%	28%	0%	70%	30%	0%	0%	0,34	0,48	2
775-02	dust	25 mm	300	72%	28%	0%	70%	30%	0%	0%	0,34	0,48	2
775-03	buffalo	25 mm	300	72%	28%	0%	70%	30%	0%	0%	0,34	0,48	2



Montreal

This semi-transparent, non-woven Honeycell fabric is of excellent quality. The elegant duo-tone fabric has a coloured front side and a white backside that reflects heat and light. Due to the 25 mm honeycomb structure, Montreal has an insulating effect. It allows the fabric to optimally contribute to a comfortable indoor climate and energy savings. Montreal is available in a width of 300 cm, in no less than 18 stylish colours.

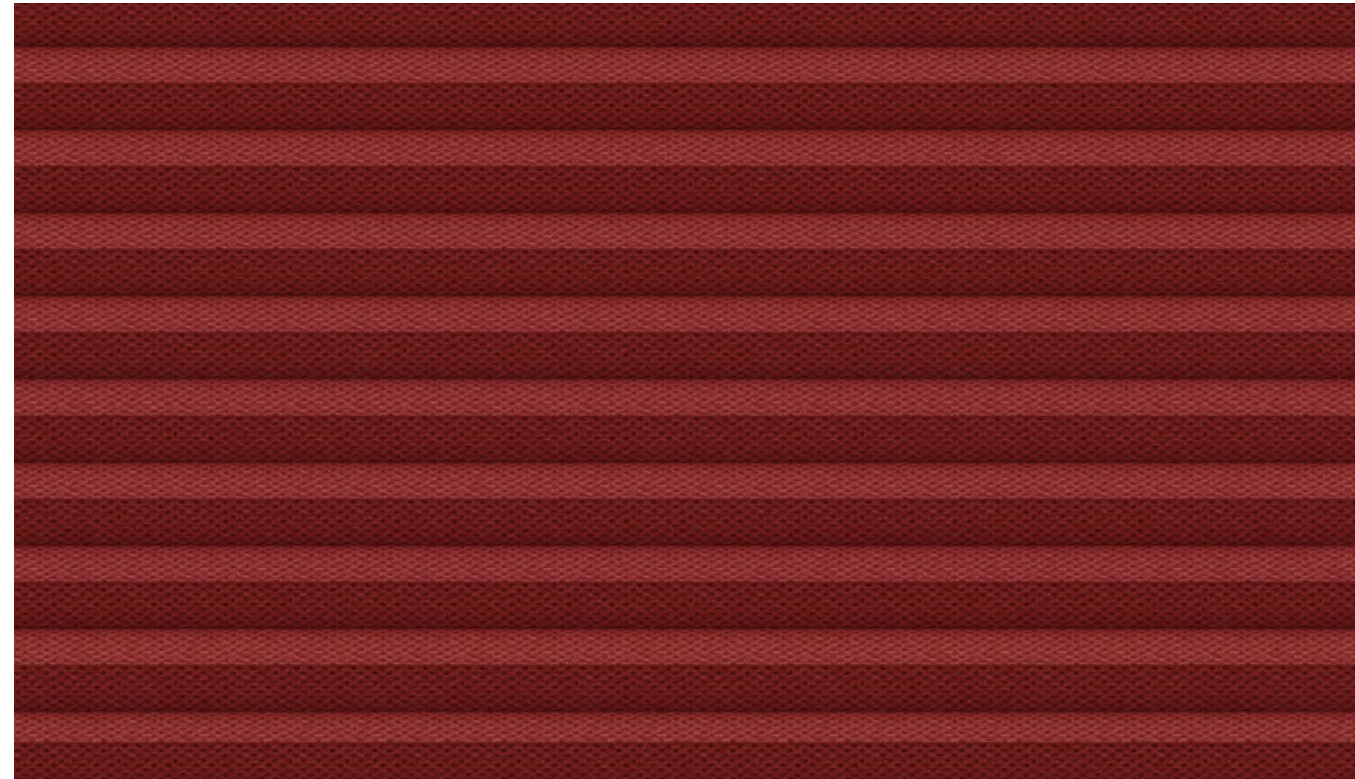
fabric specifications

composition	construction	transparency	form of cell	weight (g/m ²)	thick-ness (mm)	colour fastness (ISO 105 B02)	metalized	Oeko-Tex standard 100	flame retardant	moisture resistant	pvc/halogen free
100% PES	pointbonded non-woven fabric	semi-transparent	D-shape	138	0,21	4-5	no	yes	no	yes	yes

solar heat and light control properties

design	colour	cell size (mm)	fabric width (cm)	Rv	Av	Tv	Rs	As	Ts	Tuv	g _{tot} value	Fc-value	FC-class
7510	white	25 mm	300	49%	18%	33%	51%	6%	43%	17%	0,45	0,64	3
7511	cream	25 mm	300	47%	13%	40%	53%	6%	41%	21%	0,44	0,63	3
7512	sand	25 mm	300	48%	23%	29%	51%	16%	33%	14%	0,44	0,63	3
7513	beige	25 mm	300	47%	17%	36%	51%	14%	35%	18%	0,44	0,63	3
7514	brown	25 mm	300	41%	26%	33%	48%	16%	36%	17%	0,46	0,65	3
7515	dark braun	25 mm	300	43%	38%	19%	48%	25%	27%	9%	0,45	0,64	3
7516	light yellow	25 mm	300	45%	17%	38%	52%	10%	38%	18%	0,44	0,63	3
7519	black	25 mm	300	42%	49%	9%	43%	47%	10%	5%	0,46	0,66	3
7520	grey	25 mm	300	41%	32%	27%	50%	25%	25%	14%	0,44	0,63	3
7523	red	25 mm	300	40%	41%	19%	49%	24%	27%	11%	0,45	0,64	3
7524	dark blue	25 mm	300	43%	47%	10%	42%	41%	17%	5%	0,47	0,67	3
7525	yellow	25 mm	300	53%	16%	31%	53%	15%	32%	8%	0,43	0,62	3
7540	mercury	25 mm	300	48%	24%	28%	47%	21%	32%	13%	0,46	0,65	3
7541	charcoal	25 mm	300	44%	35%	21%	43%	33%	24%	10%	0,47	0,67	3
7530	marshmallow	25 mm	300	59%	6%	35%	56%	8%	36%	9%	0,42	0,60	3
7531	olive	25 mm	300	50%	25%	25%	50%	19%	31%	8%	0,44	0,63	3
7532	chili	25 mm	300	47%	35%	18%	51%	19%	30%	8%	0,44	0,63	3
7533	dove	25 mm	300	54%	14%	32%	53%	12%	35%	9%	0,44	0,62	3

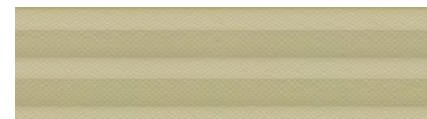




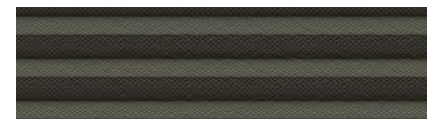
7623



7610



7616



7641



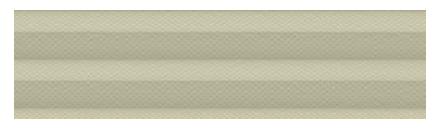
7611



7619



7630



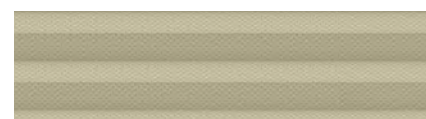
7612



7620



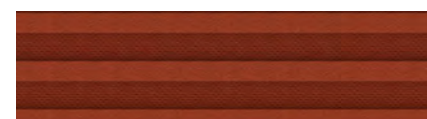
7631



7613



7624



7632



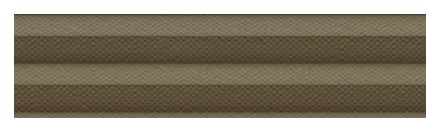
7614



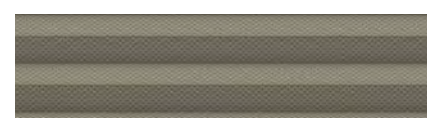
7625



7633



7615



7640

Montreal BO

This blackout, non-woven Honeycell fabric is of excellent quality. The elegant duo-tone fabric has a coloured front side and a white backside that reflects heat and light. In addition, due to its 25 mm honeycomb structure, Montreal BO has an insulating effect, which is enhanced by the silver coating on the inside of the cells. It allows the fabric to optimally contribute to energy savings in home or office. Montreal BO is available in a width of 300 cm in no less than eighteen stylish colours.

fabric specifications

composition	construction	transparency	form of cell	weight (g/m ²)	thick-ness (mm)	colour fastness (ISO 105 B02)	metalized	Oeko-Tex standard 100	flame retardant	moisture resistant	pvc/ halogen free
100% PES	pointbonded non-woven film-laminated fabric	black-out	D-shape	166	0,19	4-5	yes	yes	no	yes	yes

solar heat and light control properties

design	colour	cell size (mm)	fabric width (cm)	Rv	Av	Tv	Rs	As	Ts	Tuv	gtot value	Fc-value	FC-class
7610	white	25 mm	300	67%	33%	0%	67%	33%	0%	0%	0,35	0,50	2
7611	cream	25 mm	300	67%	33%	0%	67%	33%	0%	0%	0,35	0,50	2
7612	sand	25 mm	300	67%	33%	0%	67%	33%	0%	0%	0,35	0,50	2
7613	beige	25 mm	300	67%	33%	0%	67%	33%	0%	0%	0,35	0,50	2
7614	brown	25 mm	300	67%	33%	0%	67%	33%	0%	0%	0,35	0,50	2
7615	dark brown	25 mm	300	67%	33%	0%	67%	33%	0%	0%	0,35	0,50	2
7616	light yellow	25 mm	300	67%	33%	0%	67%	33%	0%	0%	0,35	0,50	2
7619	black	25 mm	300	67%	33%	0%	67%	33%	0%	0%	0,35	0,50	2
7620	grey	25 mm	300	67%	33%	0%	67%	33%	0%	0%	0,35	0,50	2
7623	red	25 mm	300	67%	33%	0%	67%	33%	0%	0%	0,35	0,50	2
7624	dark blue	25 mm	300	67%	33%	0%	67%	33%	0%	0%	0,35	0,50	2
7625	yellow	25 mm	300	67%	33%	0%	67%	33%	0%	0%	0,35	0,50	2
7640	mercury	25 mm	300	67%	33%	0%	67%	33%	0%	0%	0,35	0,50	2
7641	charcoal	25 mm	300	67%	33%	0%	67%	33%	0%	0%	0,35	0,50	2
7630	cloud	25 mm	300	67%	33%	0%	67%	33%	0%	0%	0,35	0,50	2
7631	olive	25 mm	300	67%	33%	0%	67%	33%	0%	0%	0,35	0,50	2
7632	chili	25 mm	300	67%	33%	0%	67%	33%	0%	0%	0,35	0,50	2
7633	dove	25 mm	300	67%	33%	0%	67%	33%	0%	0%	0,35	0,50	2



Pittsburgh

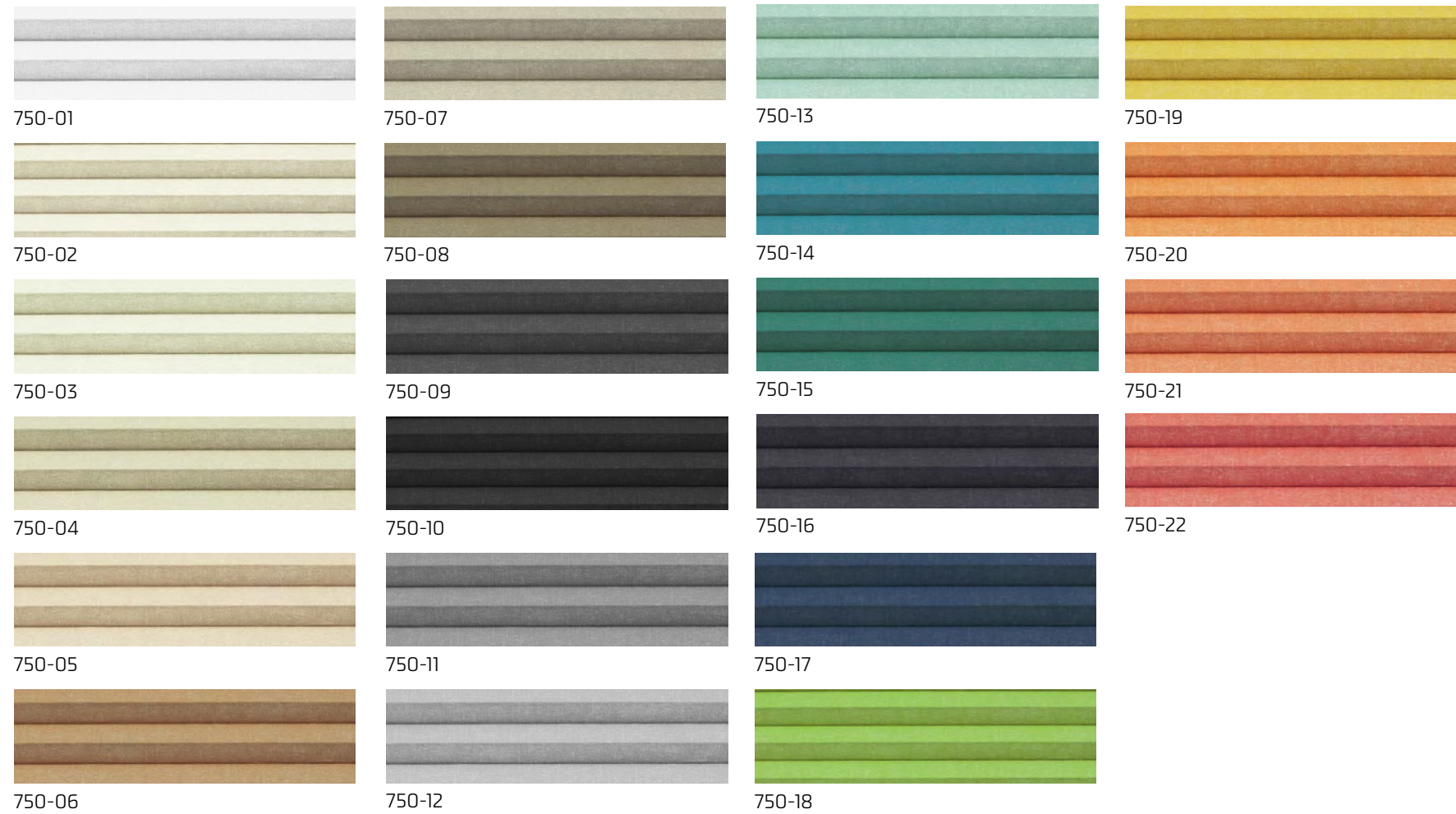
Semi-transparent Honeycell fabric Pittsburgh combines an attractive, modern colour pallet with maximum functionality. Due to the honeycomb structure, this non-woven fabric has excellent insulating properties ensuring the heat to stay outside during summer and inside during winter. Pittsburgh is available in twenty-two contemporary colours.

fabric specifications

composition	construction	transparency	form of cell	weight (g/m ²)	thick-ness (mm)	colour fastness (ISO 105 B02)	metalized	Oeko-Tex standard 100	flame retardant	moisture resistant	pvc/ halogen free
100% PES	spunlace non-woven fabric	semi-transparent	D-shape	151	0,18	4-5	no	yes	no	yes	yes

solar heat and light control properties

design	colour	cell size (mm)	fabric width (cm)	Rv	Av	Tv	Rs	As	Ts	Tuv	g _{tot} value	Fc-value	FC-class
750-01	snow	25 mm	300	54%	8%	38%	52%	10%	38%	16%	0,44	0,63	3
750-02	bright	25 mm	300	61%	8%	31%	58%	11%	31%	6%	0,41	0,59	2
750-03	cloud	25 mm	300	61%	5%	34%	58%	8%	34%	7%	0,41	0,59	2
750-04	sand	25 mm	300	58%	16%	26%	55%	17%	28%	6%	0,42	0,60	3
750-05	apricot	25 mm	300	60%	12%	28%	57%	13%	30%	5%	0,41	0,59	2
750-06	nougat	25 mm	300	52%	30%	18%	50%	28%	22%	5%	0,44	0,62	3
750-07	greige	25 mm	300	57%	24%	19%	55%	23%	22%	4%	0,42	0,60	3
750-08	dune	25 mm	300	49%	36%	15%	48%	34%	18%	5%	0,45	0,64	3
750-09	storm	25 mm	300	53%	39%	8%	51%	40%	9%	3%	0,43	0,61	3
750-10	charcoal	25 mm	300	42%	51%	7%	41%	51%	8%	3%	0,47	0,67	3
750-11	cinder	25 mm	300	51%	32%	17%	49%	31%	20%	6%	0,44	0,63	3
750-12	dove	25 mm	300	55%	24%	21%	53%	22%	25%	5%	0,43	0,61	3
750-13	spa	25 mm	300	55%	22%	23%	53%	21%	26%	5%	0,43	0,61	3
750-14	teal	25 mm	300	51%	33%	16%	51%	26%	23%	6%	0,43	0,62	3
750-15	arctic	25 mm	300	48%	42%	10%	47%	40%	13%	4%	0,45	0,64	3
750-16	eclipse	25 mm	300	43%	48%	9%	41%	47%	12%	5%	0,47	0,67	3
750-17	midnight	25 mm	300	47%	46%	7%	45%	44%	11%	3%	0,45	0,65	3
750-18	lime	25 mm	300	54%	24%	22%	52%	22%	26%	5%	0,43	0,62	3
750-19	lemon	25 mm	300	54%	23%	23%	52%	21%	27%	5%	0,43	0,62	3
750-20	pumpkin	25 mm	300	50%	30%	20%	51%	20%	29%	6%	0,44	0,62	3
750-21	flamingo	25 mm	300	46%	41%	13%	49%	27%	24%	4%	0,45	0,64	3
750-22	raspberry	25 mm	300	46%	40%	14%	49%	25%	26%	6%	0,45	0,64	3





Pittsburgh BO

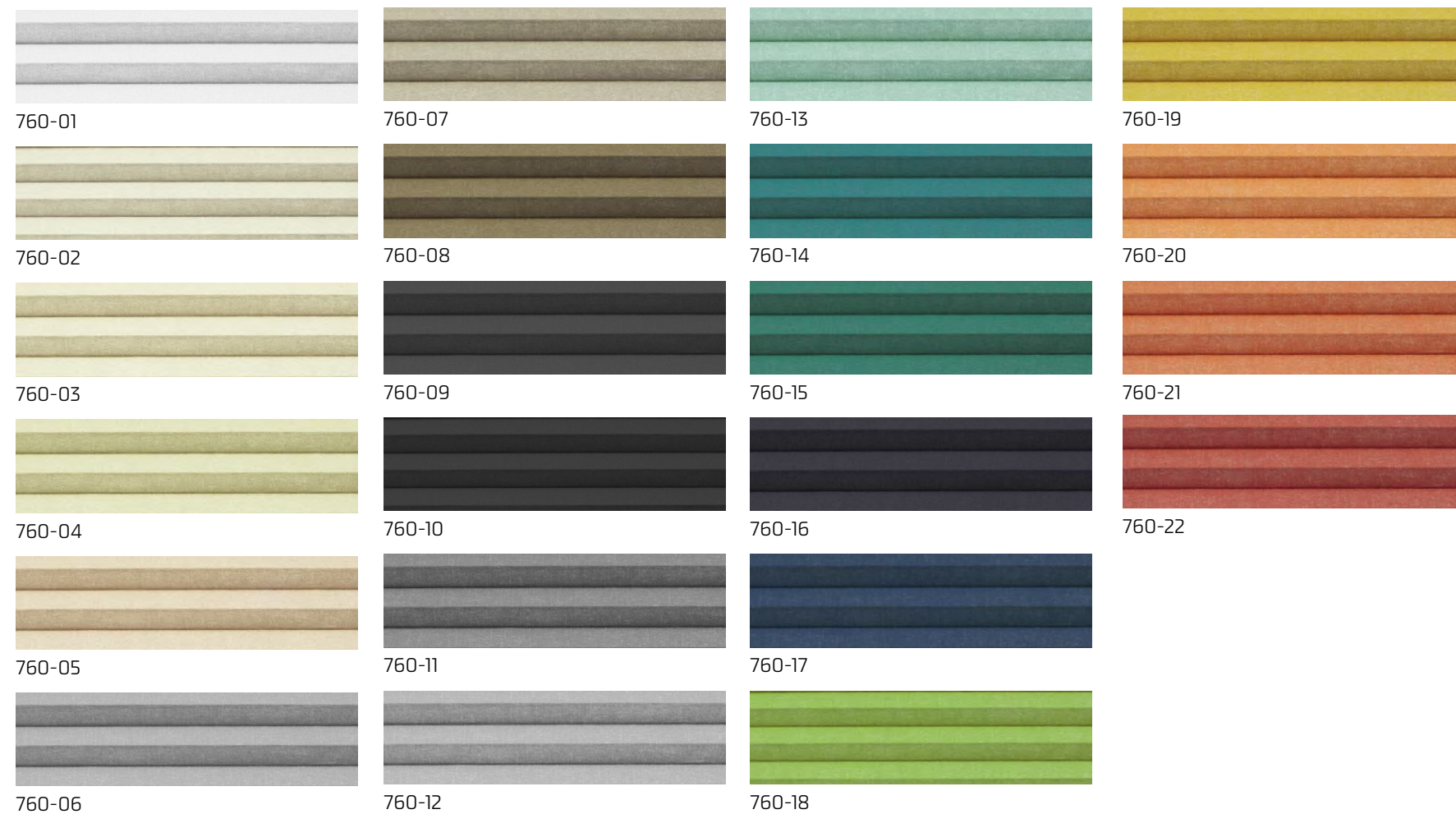
Black-out Honeycell fabric Pittsburgh combines an attractive, modern colour pallet with a maximum of functionality. Due to the honeycomb structure, this non-woven 25mm fabric has excellent insulating properties ensuring the heat to stay outside during summer and inside during winter. The smaller cell size allows construction in tight spaces such as on sliding panels or glass doors . Pittsburgh BO 25 mm is available in 22 colours.

fabric specifications

composition	construction	transparency	form of cell	weight (g/m²)	thick-ness (mm)	colour fastness (ISO 105 B02)	metalized	Deko-Tex standard 100	flame retardant	moisture resistant	pvc/halogen free
100% PES	spunlace non-woven film-laminated fabric	black-out	D-shape	186	0,17	4-5	yes	yes	no	yes	yes

solar heat and light control properties

design	colour	cell size (mm)	fabric width (cm)	Rv	Av	Tv	Rs	As	Ts	Tuv	gtot value	Fc-value	FC-class
760-01	snow	25 mm	300	68%	32%	0%	68%	32%	0%	-	0,35	0,49	2
760-02	bright	25 mm	300	68%	32%	0%	68%	32%	0%	-	0,35	0,49	2
760-03	melon	25 mm	300	68%	32%	0%	68%	32%	0%	-	0,35	0,49	2
760-04	sand	25 mm	300	68%	32%	0%	68%	32%	0%	-	0,35	0,49	2
760-05	apricot	25 mm	300	68%	32%	0%	68%	32%	0%	-	0,35	0,49	2
760-06	dove	25 mm	300	68%	32%	0%	68%	32%	0%	-	0,35	0,49	2
760-07	greige	25 mm	300	68%	32%	0%	68%	32%	0%	-	0,35	0,49	2
760-08	dune	25 mm	300	68%	32%	0%	68%	32%	0%	-	0,35	0,49	2
760-09	storm	25 mm	300	68%	32%	0%	68%	32%	0%	-	0,35	0,49	2
760-10	charcoal	25 mm	300	68%	32%	0%	68%	32%	0%	-	0,35	0,49	2
760-11	cinder	25 mm	300	68%	32%	0%	68%	32%	0%	-	0,35	0,49	2
760-12	limestone	25 mm	300	68%	32%	0%	68%	32%	0%	-	0,35	0,49	2
760-13	indigo	25 mm	300	68%	32%	0%	68%	32%	0%	-	0,35	0,49	2
760-14	teal	25 mm	300	68%	32%	0%	68%	32%	0%	-	0,35	0,49	2
760-15	arctic	25 mm	300	68%	32%	0%	68%	32%	0%	-	0,35	0,49	2
760-16	eclipse	25 mm	300	68%	32%	0%	68%	32%	0%	-	0,35	0,49	2
760-17	smoke	25 mm	300	68%	32%	0%	68%	32%	0%	-	0,35	0,49	2
760-18	lime	25 mm	300	68%	32%	0%	68%	32%	0%	-	0,35	0,49	2
760-19	lemon	25 mm	300	68%	32%	0%	68%	32%	0%	-	0,35	0,49	2
760-20	pumpkin	25 mm	300	68%	32%	0%	68%	32%	0%	-	0,35	0,49	2
760-21	flamingo	25 mm	300	68%	32%	0%	68%	32%	0%	-	0,35	0,49	2
760-22	raspberry	25 mm	300	68%	32%	0%	68%	32%	0%	-	0,35	0,49	2





Vernon

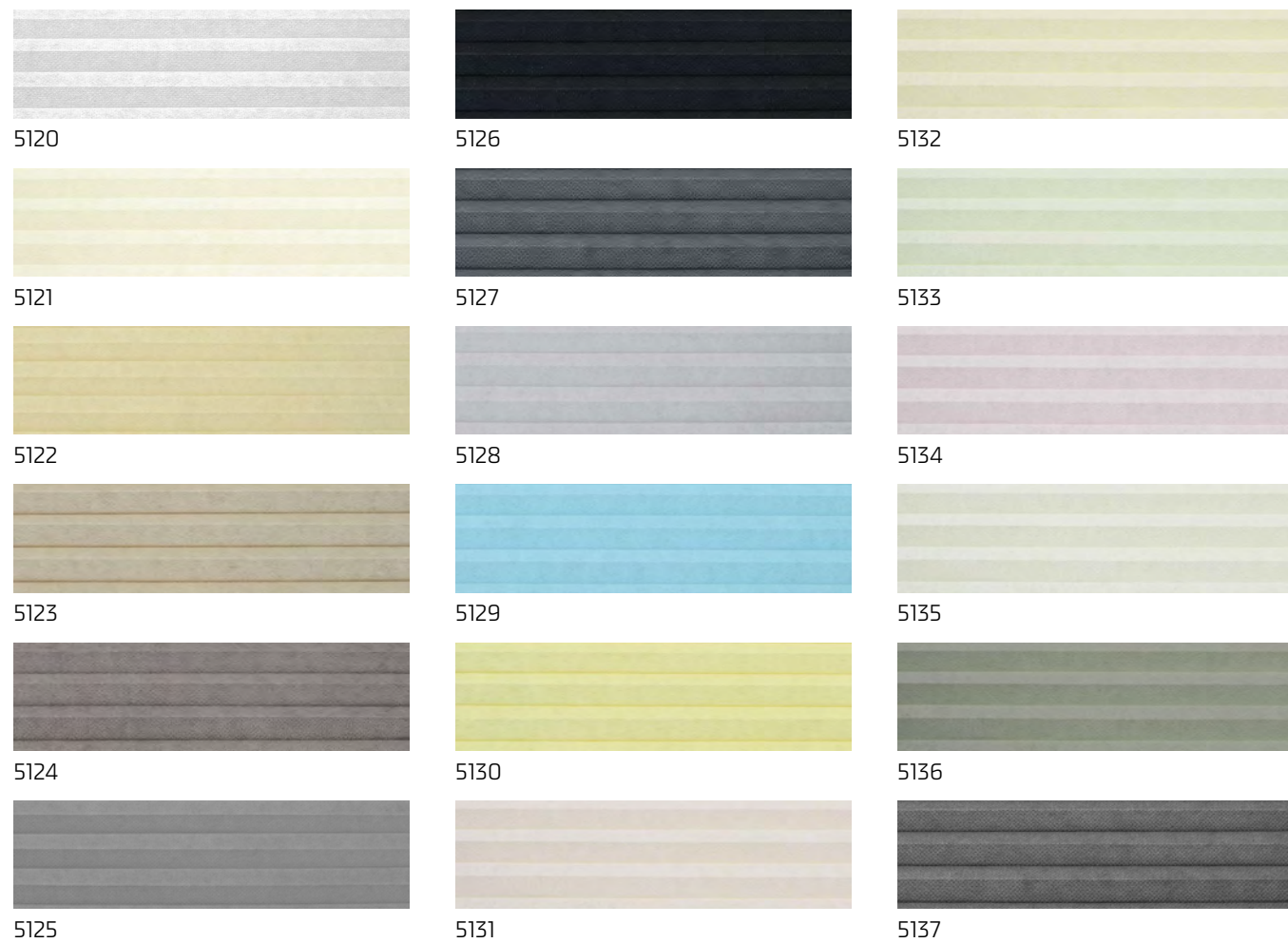
Semi-transparent Honeycell-fabric Vernon is the full-tone variety of fabric Montreal. The front-side and the back of this non-woven voile have an identical colour, which makes the fabric blend into the architecture, both on the inside and outside of the building. The timeless colour palette, eighteen colours in total, is soft and natural, and comprises several more modern pastel colour tones. Due to the 25 mm honeycomb structure, the fabric has an insulating function and contributes to a comfortable indoor climate and energy saving.

fabric specifications

composition	construction	transparency	form of cell	weight (g/m²)	thick-ness (mm)	colour fastness (ISO 105 B02)	metalized	Oeko-Tex standard 100	flame retardant	moisture resistant	pvc/halogen free
100% PES	pointbonded non-woven fabric	semi-transparent	O-shape	138	0,21	4-5	no	yes	no	yes	yes

solar heat and light control properties

design	colour	cell size (mm)	fabric width (cm)	Rv	Av	Tv	Rs	As	Ts	Tuv	gtot value	Fc-value	FC-class
5120	white	25 mm	300	63%	9%	28%	57%	14%	29%	5%	0,41	0,59	2
5121	creme	25 mm	300	56%	23%	21%	56%	11%	33%	5%	0,42	0,60	3
5122	sand	25 mm	300	47%	34%	19%	51%	20%	29%	5%	0,44	0,63	3
5123	dune	25 mm	300	33%	50%	17%	44%	30%	26%	6%	0,47	0,67	3
5124	cinder	25 mm	300	21%	60%	19%	33%	39%	28%	10%	0,52	0,74	3
5125	cement	25 mm	300	36%	44%	20%	42%	32%	26%	6%	0,48	0,68	3
5126	raven	25 mm	300	4%	95%	1%	5%	94%	1%	1%	0,62	0,89	4
5127	ash	25 mm	300	13%	76%	11%	16%	73%	11%	6%	0,58	0,83	4
5128	dawn	25 mm	300	46%	35%	19%	51%	22%	27%	5%	0,44	0,62	3
5129	sky	25 mm	300	41%	42%	17%	47%	26%	27%	5%	0,45	0,65	3
5130	lime	25 mm	300	46%	33%	21%	49%	20%	31%	5%	0,45	0,64	3
5131	blush	25 mm	300	52%	25%	23%	55%	14%	31%	6%	0,42	0,60	3
5132	grain	25 mm	300	48%	24%	28%	49%	18%	33%	7%	0,45	0,64	3
5133	mint	25 mm	300	54%	21%	25%	53%	19%	28%	5%	0,43	0,61	3
5134	ash rose	25 mm	300	48%	29%	23%	50%	21%	29%	5%	0,44	0,63	3
5135	pebble	25 mm	300	49%	24%	27%	50%	19%	31%	6%	0,45	0,64	3
5136	mist	25 mm	300	49%	24%	27%	50%	19%	31%	6%	0,47	0,67	3
5137	dust	25 mm	300	13%	79%	8%	32%	48%	20%	4%	0,52	0,74	3





565-01



565-02



565-04



565-06



565-03



565-05



565-07



Windsor

Semi-transparent Honeycell fabric Windsor has the same quality as basic cloth Rioja. The fabric has a modern multi-coloured linear print. Due to its 25 mm cellular structure and white backing, fabric Windsor has excellent insulation and reflection qualities. This makes the material the perfect combination of both functionality and atmosphere. Windsor is available in seven warm colour settings.

fabric specifications

composition	construction	transparency	form of cell	weight (g/m ²)	thickness (mm)	colour fastness (ISO 105 B02)	metalized	Oeko-Tex standard 100	flame retardant	moisture resistant	pvc/halogen free
100% PES	spunlace non-woven fabric + digital print	semi-transparent	O-shape	167	0,26	4-5	no	yes	no	yes	yes

solar heat and light control properties

design	colour	cell size (mm)	fabric width (cm)	Rv	Av	Tv	Rs	As	Ts	Tuv	gtot value	Fc-value	FC-class
565-01	rose quartz	25mm	250	64%	16%	20%	64%	13%	23%	-	0,38	0,54	2
565-02	citrine	25mm	250	64%	16%	20%	64%	13%	23%	-	0,38	0,54	2
565-03	tigers eye	25mm	250	64%	16%	20%	64%	13%	23%	-	0,38	0,54	2
565-04	coral	25mm	250	64%	16%	20%	64%	13%	23%	-	0,38	0,54	2
565-05	jade	25mm	250	64%	16%	20%	64%	13%	23%	-	0,38	0,54	2
565-06	topaz	25mm	250	60%	34%	6%	60%	33%	7%	-	0,39	0,56	2
565-07	amethyst	25mm	250	60%	34%	6%	60%	33%	7%	-	0,39	0,56	2



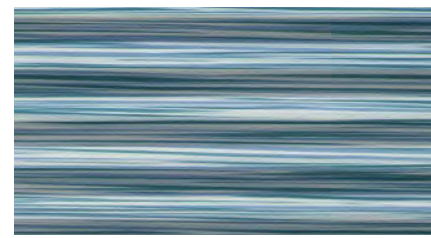
575-01



575-02



575-04



575-06



575-03



575-05



575-07

Windsor BO

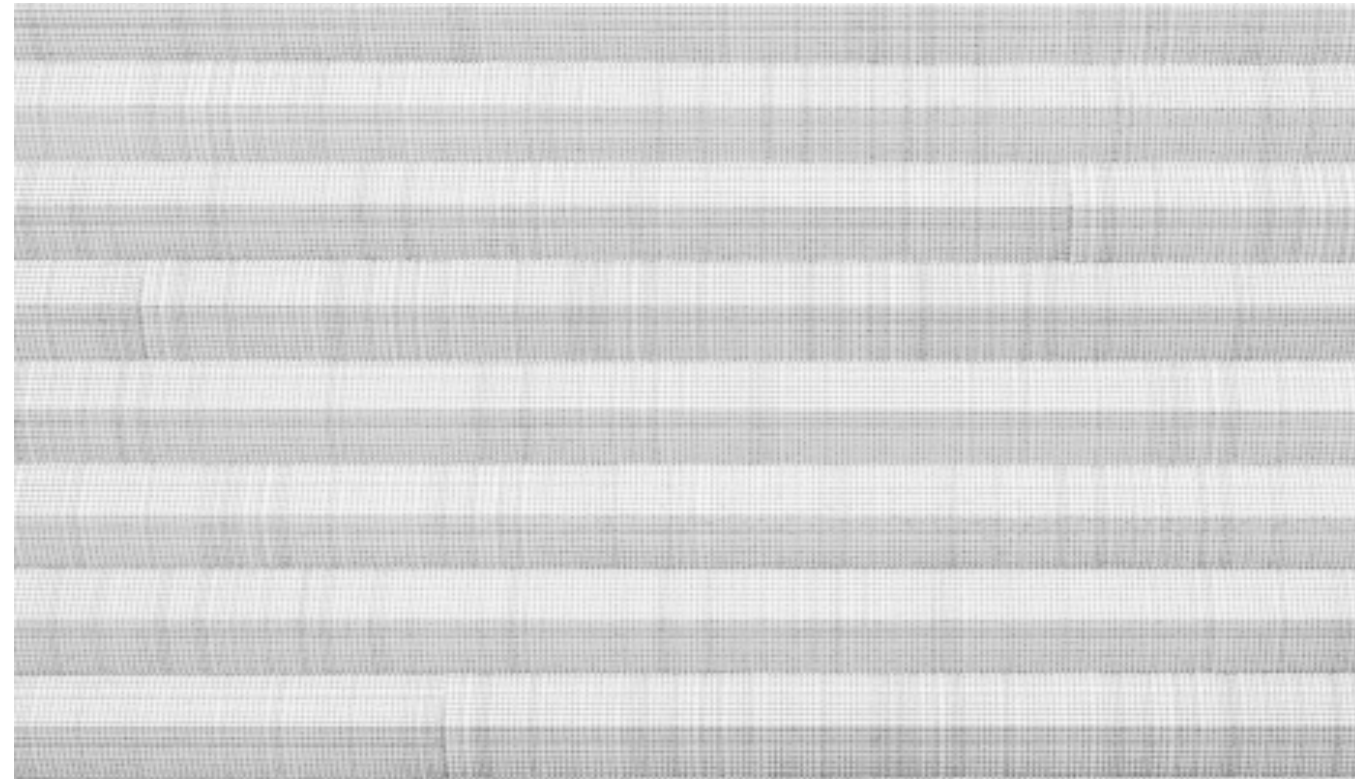
Black-out Honeycell fabric Windsor BO has the same quality as basic cloth Rioja. The fabric has a modern multi-coloured linear print. Due to its 25 mm cellular structure and white backing, fabric Windsor BO has excellent insulation and reflection qualities. This makes the material the perfect combination between functionality and atmosphere. Windsor BO is available in seven warm colour settings. The fabric has a silver coating on the inside for additional insulation.

fabric specifications

composition	construction	transparency	form of cell	weight (g/m ²)	thickness (mm)	colour fastness (ISO 105 B02)	metalized	Oeko-Tex standard 100	flame retardant	moisture resistant	pvc/halogen free
100% PES	spunlace non-woven film-laminated fabric + digital print	black-out	O-shape	204	0,18	4-5	yes	yes	no	yes	yes

solar heat and light control properties

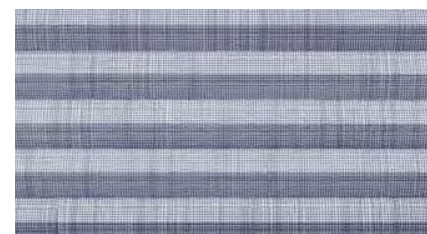
design	colour	cell size (mm)	fabric width (cm)	Rv	Av	Tv	Rs	As	Ts	Tuv	gtot value	Fc-value	FC-class
575-01	rose quartz	25mm	250	72%	28%	0%	70%	30%	0%	0%	0,34	0,48	2
575-02	citrine	25mm	250	72%	28%	0%	70%	30%	0%	0%	0,34	0,48	2
575-03	tigers eye	25mm	250	72%	28%	0%	70%	30%	0%	0%	0,34	0,48	2
575-04	coral	25mm	250	72%	28%	0%	70%	30%	0%	0%	0,34	0,48	2
575-05	jade	25mm	250	72%	28%	0%	70%	30%	0%	0%	0,34	0,48	2
575-06	topaz	25mm	250	72%	28%	0%	70%	30%	0%	0%	0,34	0,48	2
575-07	amethyst	25mm	250	72%	28%	0%	70%	30%	0%	0%	0,34	0,48	2



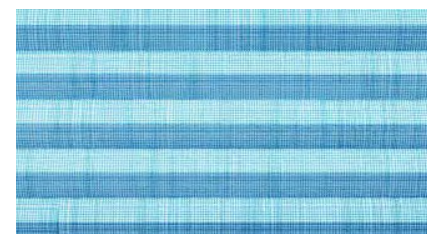
561-01



561-02



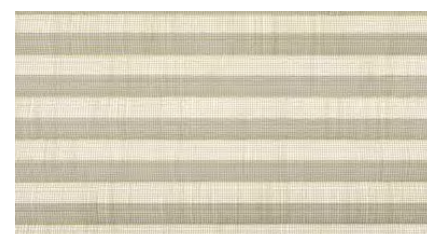
561-05



561-08



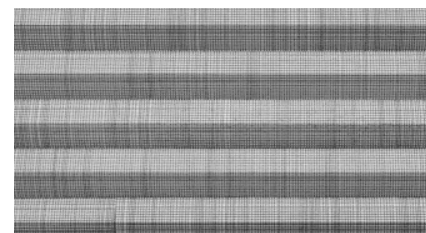
561-03



561-06



561-09



561-04



561-07



561-10



Milton

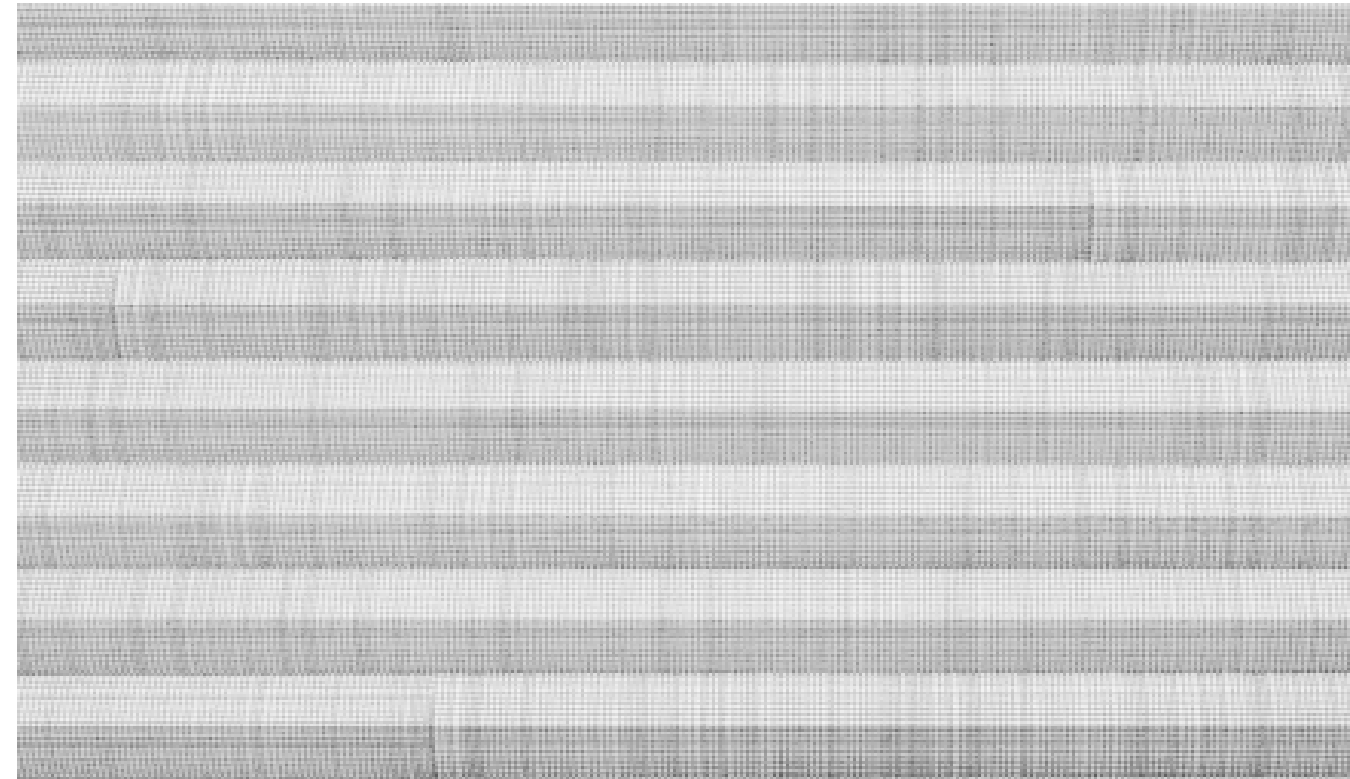
Semi-transparent Honeycell fabric Milton has the same quality as basic cloth Rioja. The fabric has a modern textile print in one colour. Due to its 25 mm cellular structure and white backing, fabric Milton has excellent insulation and reflection qualities. This makes the material the perfect combination of both functionality and atmosphere. Milton is available in ten modern and fresh colours.

fabric specifications

composition	construction	transparency	form of cell	weight (g/m ²)	thick-ness (mm)	colour fastness (ISO 105 B02)	metalized	Oeko-Tex standard 100	flame retardant	moisture resistant	pvc/halogen free
100% PES	spunlace non-woven fabric + screen print	semi-transparent	D-shape	167	0.26	4-5	no	yes	no	yes	yes

solar heat and light control properties

design	colour	cell size (mm)	fabric width (cm)	Rv	Av	Tv	Rs	As	Ts	Tuv	gtot value	Fc-value	FC-class
561-01	cotton	25mm	300	62%	21%	17%	62%	17%	21%	-	0.39	0.55	2
561-02	sand shell	25mm	300	69%	21%	10%	69%	14%	17%	7%	0.35	0.50	2
561-03	olive	25mm	300	62%	21%	17%	62%	17%	21%	-	0.39	0.55	2
561-04	charcoal	25mm	300	60%	34%	6%	60%	33%	7%	-	0.39	0.56	2
561-05	mist	25mm	300	60%	34%	6%	60%	33%	7%	-	0.39	0.56	2
561-06	camel	25mm	300	68%	20%	12%	66%	20%	14%	6%	0.36	0.52	2
561-07	lime	25mm	300	64%	16%	20%	64%	13%	23%	-	0.38	0.54	2
561-08	turquoise	25mm	300	60%	34%	6%	60%	33%	7%	-	0.39	0.56	2
561-09	indigo	25mm	300	60%	34%	6%	60%	33%	7%	-	0.39	0.56	2
561-10	cerise	25mm	300	60%	34%	6%	60%	33%	7%	-	0.39	0.56	2



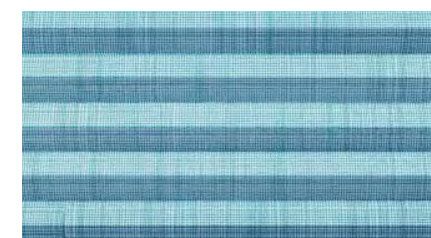
571-01



571-02



571-05



571-08



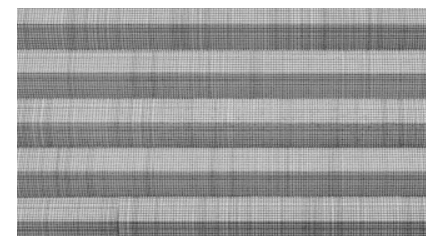
571-03



571-06



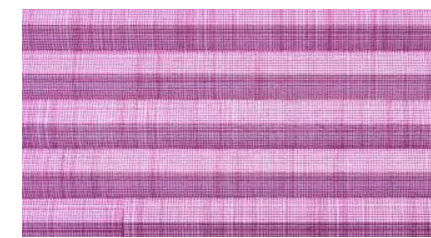
571-09



571-04



571-07



571-10

Milton BO

Black-out Honeycell fabric Milton BO has the same quality as basic cloth Rioja. The fabric has a modern textile print in one colour. Due to its 25 mm cellular structure and white backing, fabric Milton BO has excellent insulation and reflection qualities. This makes the material the perfect combination between functionality and atmosphere. Milton BO is available in ten modern and fresh colours. The fabric has a silver coating on the inside for additional insulation.

fabric specifications

composition	construction	transparency	form of cell	weight (g/m ²)	thick-ness (mm)	colour fastness (ISO 105 B02)	metalized	Oeko-Tex standard 100	flame retardant	moisture resistant	pvc/ halogen free
100% PES	spunlace non-woven film-laminated fabric + screen print	black-out	D-shape	204	0,18	4-5	yes	yes	no	yes	yes

solar heat and light control properties

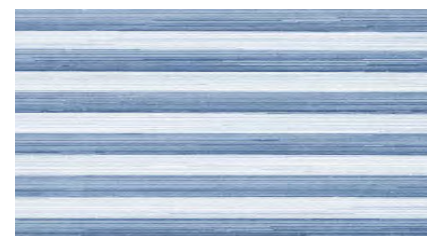
design	colour	cell size (mm)	fabric width (cm)	Rv	Av	Tv	Rs	As	Ts	Tuv	g _{tot} value	Fc-value	Fc-class
571-01	cotton	25 mm	300	72%	28%	0%	70%	30%	0%	0%	0,34	0,48	2
571-02	sand shell	25 mm	300	72%	28%	0%	70%	30%	0%	0%	0,34	0,48	2
571-03	olive	25 mm	300	72%	28%	0%	70%	30%	0%	0%	0,34	0,48	2
571-04	charcoal	25 mm	300	72%	28%	0%	70%	30%	0%	0%	0,34	0,48	2
571-05	mist	25 mm	300	72%	28%	0%	70%	30%	0%	0%	0,34	0,48	2
571-06	camel	25 mm	300	72%	28%	0%	70%	30%	0%	0%	0,34	0,48	2
571-07	lime	25 mm	300	72%	28%	0%	70%	30%	0%	0%	0,34	0,48	2
571-08	turquoise	25 mm	300	72%	28%	0%	70%	30%	0%	0%	0,34	0,48	2
571-09	indigo	25 mm	300	72%	28%	0%	70%	30%	0%	0%	0,34	0,48	2
571-10	cerise	25 mm	300	72%	28%	0%	70%	30%	0%	0%	0,34	0,48	2



5240



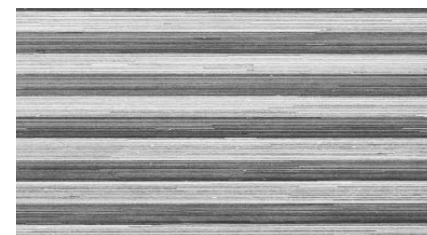
5241



5244



5247



5242



5245



5248



5243



5246



5249



Halifax

Semi-transparent Honeycell fabric Halifax has the same quality as basic cloth Rioja. The fabric has a subtle irregular linear print pattern. Due to its 25 mm cellular structure and white backing, fabric Halifax has excellent insulation and reflection qualities. This makes the material the perfect combination of both functionality and atmosphere. Halifax is available in ten timeless colours.

fabric specifications

composition	construction	transparency	form of cell	weight (g/m ²)	thick-ness (mm)	colour fastness (ISO 105 B02)	metalized	Oeko-Tex standard 100	flame retardant	moisture resistant	pvc/ halogen free
100% PES	spunlace non-woven fabric + screen print	semi-transparent	D-shape	163	0,23	4-5	no	yes	no	yes	yes

solar heat and light control properties

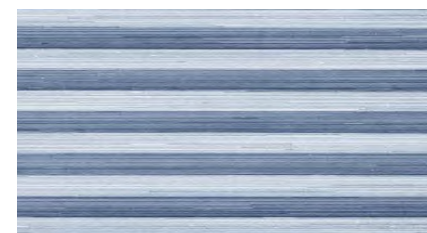
design	colour	cell size (mm)	fabric width (cm)	Rv	Av	Tv	Rs	As	Ts	Tuv	gtot value	Fc-value	FC-class
5240	sand	25 mm	300	62%	21%	17%	62%	17%	21%	-	0,39	0,55	2
5241	coffee	25 mm	300	62%	21%	17%	62%	17%	21%	-	0,39	0,55	2
5242	charcoal	25 mm	300	62%	21%	17%	62%	17%	21%	-	0,39	0,55	2
5243	mist	25 mm	300	62%	21%	17%	62%	17%	21%	-	0,39	0,55	2
5244	sky	25 mm	300	60%	34%	6%	60%	33%	7%	-	0,39	0,56	2
5245	moss	25 mm	300	62%	21%	17%	62%	17%	21%	-	0,39	0,55	2
5246	straw	25 mm	300	70%	8%	22%	70%	6%	24%	13%	0,35	0,50	2
5247	cinder	25 mm	300	68%	17%	15%	68%	13%	19%	11%	0,36	0,51	2
5248	limestone	25 mm	300	68%	11%	21%	69%	7%	24%	16%	0,36	0,51	2
5249	storm	25 mm	300	71%	18%	11%	70%	18%	12%	9%	0,35	0,50	2



5260



5261



5264



5267



5262



5265



5268



5263



5266



5269

Halifax BO

Black-out Honeycell fabric Halifax BO has the same quality as basic cloth Rioja. The fabric has a subtle irregular linear print pattern. Due to its 25 mm cellular structure and white backing, fabric Halifax BO has excellent insulation and reflection qualities. This makes the material the perfect combination between functionality and atmosphere. Halifax BO is available in ten natural timeless colours. The fabric has a silver coating on the inside for additional insulation.

fabric specifications

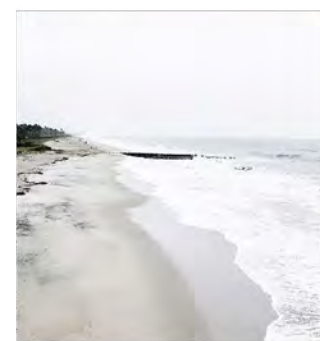
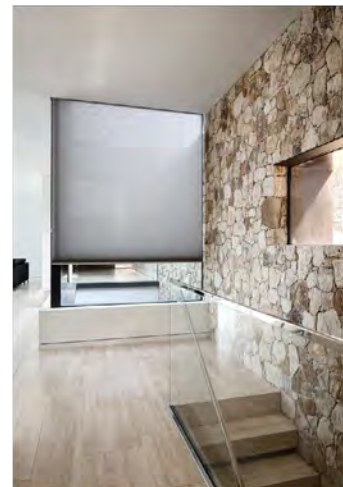
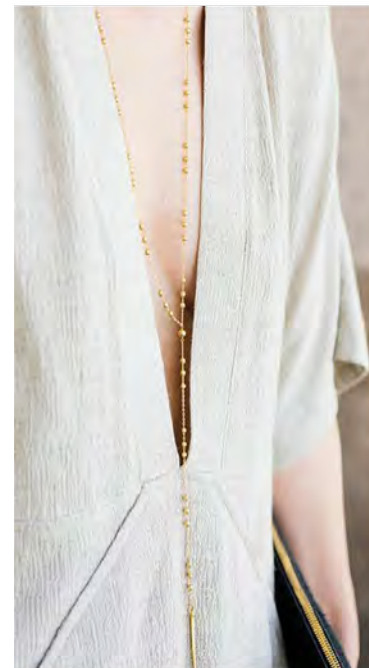
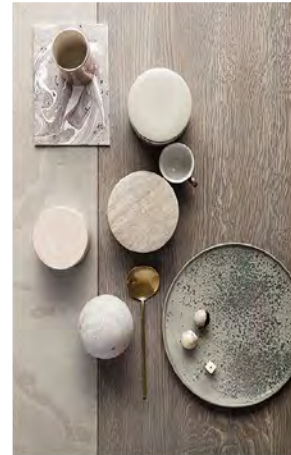
composition	construction	transparency	form of cell	weight (g/m ²)	thick-ness (mm)	colour fastness (ISO 105 B02)	metalized	Oeko-Tex standard 100	flame retardant	moisture resistant	pvc/halogen free
100% PES	spunlace non-woven film-laminated fabric + screen print	black-out	D-shape	167	0,14	4-5	yes	yes	no	yes	yes

solar heat and light control properties

design	colour	cell size (mm)	fabric width (cm)	Rv	Av	Tv	Rs	As	Ts	Tuv	g _{tot} value	Fc-value	FC-class
5260	sand	25 mm	300	72%	28%	0%	70%	30%	0%	0%	0,34	0,48	2
5261	coffee	25 mm	300	72%	28%	0%	70%	30%	0%	0%	0,34	0,48	2
5262	charcoal	25 mm	300	72%	28%	0%	70%	30%	0%	0%	0,34	0,48	2
5263	mist	25 mm	300	72%	28%	0%	70%	30%	0%	0%	0,34	0,48	2
5264	sky	25 mm	300	72%	28%	0%	70%	30%	0%	0%	0,34	0,48	2
5265	moss	25 mm	300	72%	28%	0%	70%	30%	0%	0%	0,34	0,48	2
5266	straw	25 mm	300	71%	29%	0%	71%	29%	0%	0%	0,34	0,48	2
5267	cinder	25 mm	300	71%	29%	0%	71%	29%	0%	0%	0,34	0,48	2
5268	limestone	25 mm	300	71%	29%	0%	71%	29%	0%	0%	0,34	0,48	2
5269	storm	25 mm	300	71%	29%	0%	71%	29%	0%	0%	0,34	0,48	2

RUSTIC NATURE

Take a step closer to nature with this refreshing collection of pure Honeycell fabrics. A sense of authenticity and a feeling of comfort are instilled in interiors with the delicate woven texture of the plain fabrics. The inviting colour tones are reminiscent of sandy beaches, robust stones and fresh forests.



Oxford 25 mm

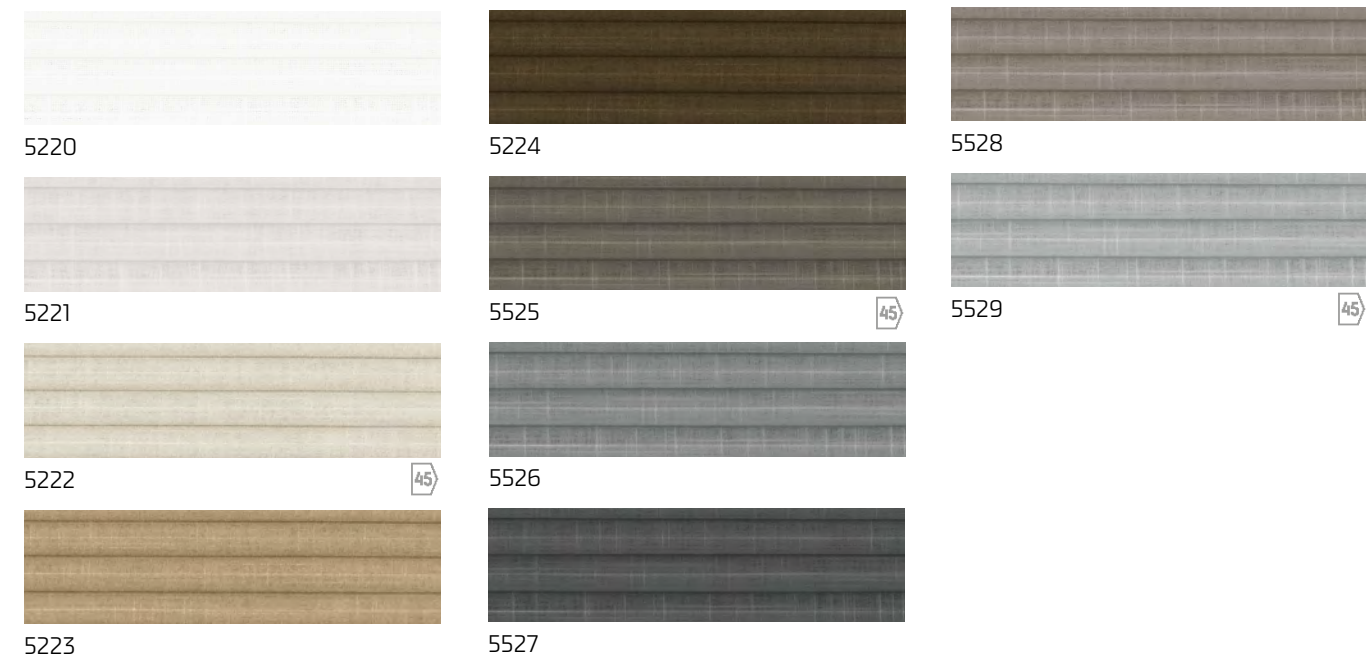
Transparent, high quality Honeycell woven fabric Oxford has a course weaving texture that creates a refined linen look. Thanks to the honeycomb structure, fabric Oxford has an insulating effect. It allows the fabric to optimally contribute to a comfortable indoor climate. The fabric is available in 10 trendy, natural colour tones.

fabric specifications

composition	construction	transparency	form of cell	cell size	weight (g/m ²)	thick-ness (mm)	colour fastness (ISO 105 B02)	metalized	Oeko-Tex standard 100	flame retardant	moisture resistant	pvc/halogen free
100% PES	woven fabric	transparent	D-shape	25 mm 45 mm	288	0,24	4-5	no	yes	no	yes	yes

solar heat and light control properties

design	colour	cell size (mm)	fabric width (cm)	Rv	Av	Tv	Rs	As	Ts	Tuv	g _{tot} value	Fc-value	FC-class
5220	snow white	25 mm	300	50%	17%	33%	51%	15%	34%	-	0,44	0,63	3
5221	off-white	25 mm	300	54%	16%	30%	54%	10%	36%	16%	0,43	0,62	3
5222	beach beige	25 / 45 mm	300	55%	19%	26%	56%	11%	33%	10%	0,42	0,60	3
5223	cacao	25 mm	300	51%	27%	22%	52%	20%	28%	12%	0,44	0,62	3
5224	espresso	25 mm	300	49%	34%	17%	49%	36%	15%	10%	0,44	0,63	3
5225	moon rock	25 / 45 mm	300	50%	30%	20%	50%	28%	22%	11%	0,44	0,63	3
5226	stone blue	25 mm	300	51%	32%	17%	51%	24%	25%	9%	0,44	0,62	3
5227	charcoal	25 mm	300	47%	35%	18%	45%	36%	19%	10%	0,46	0,66	3
5228	pebble	25 mm	300	53%	25%	22%	52%	21%	27%	11%	0,43	0,62	3
5229	light grey	25 / 45 mm	300	53%	23%	24%	56%	13%	31%	11%	0,42	0,60	3





Hamilton

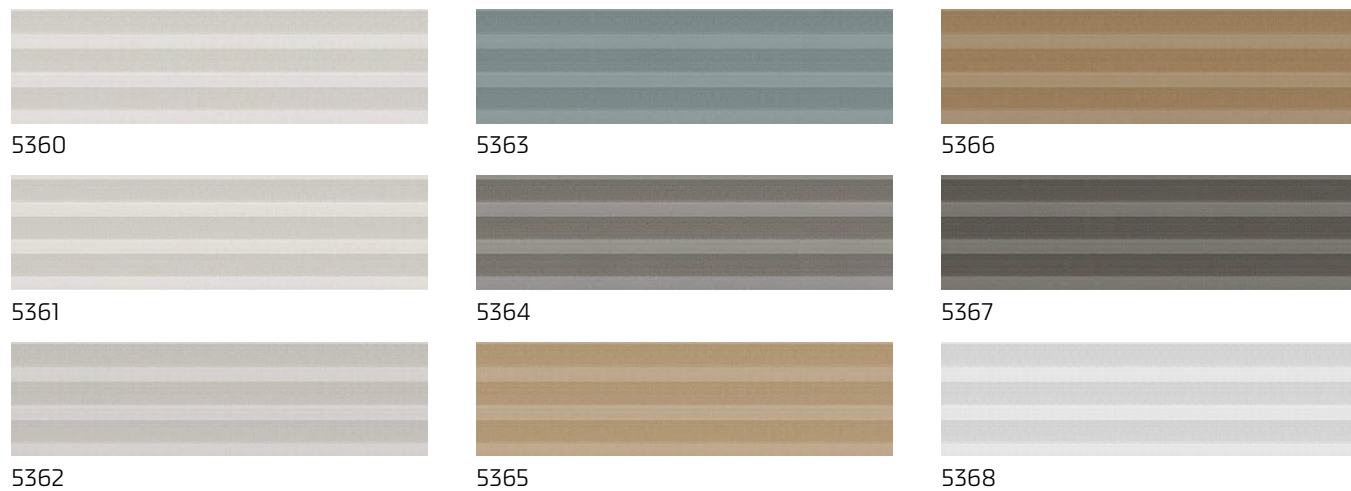
The weaving structure of semi-transparent Honeycell fabric Hamilton has a stylish look and feel. The yarn fabric is available in nine colours. Due to its 25 mm honeycomb structure, the fabric has an insulating effect and it contributes to energy savings throughout the year. Hamilton is available in a width of 300 cm, making it very suitable for larger dimensions.

fabric specifications

composition	construction	transparency	form of cell	weight (g/m ²)	thick-ness (mm)	colour fastness (ISO 105 B02)	metalized	Oeko-Tex standard 100	flame retardant	moisture resistant	pvc/halogen free
100% PES	woven fabric	semi-transparent	D-shape	288	0,24	4-5	no	yes	no	yes	yes

solar heat and light control properties

design	colour	cell size (mm)	fabric width (cm)	Rv	Av	Tv	Rs	As	Ts	Tuv	g _{tot} value	Fc-value	FC-class
5360	white	25 mm	300	56%	18%	26%	54%	20%	26%	10%	0,39	0,55	2
5361	ivory	25 mm	300	55%	25%	20%	58%	14%	28%	6%	0,41	0,58	2
5362	light grey	25 mm	300	59%	20%	21%	56%	19%	25%	7%	0,41	0,59	2
5363	grey	25 mm	300	51%	36%	13%	55%	25%	20%	6%	0,42	0,60	3
5364	pebble	25 mm	300	55%	28%	17%	58%	19%	23%	7%	0,41	0,58	2
5365	dark beige	25 mm	300	52%	30%	18%	58%	19%	23%	7%	0,41	0,58	2
5366	cacao	25 mm	300	52%	30%	18%	51%	26%	23%	7%	0,40	0,57	2
5367	moon rock	25 mm	300	54%	30%	16%	52%	31%	17%	7%	0,43	0,61	3
5368	snow white	25 mm	300	55%	20%	25%	60%	8%	32%	-	0,40	0,57	2



Ohio

The frontside and backside of this so-called full-tone fabric have identical colours. The weaving structure of transparent full-tone Honeycell fabric Ohio has a stylish linen look and feel. The open structure diffuses the incoming light beautifully. Due to its 25 mm honeycomb structure, the fabric has an insulating effect and it contributes to energy savings throughout the year. Ohio is available in a width of 300 cm, making it very suitable for larger dimensions. Ohio is the full-tone version of the Hudson fabric. Ohio fabric is available in five stylish colours.

fabric specifications

composition	construction	transparency	form of cell	weight (g/m ²)	thick-ness (mm)	colour fastness (ISO 105 B02)	metalized	Oeko-Tex standard 100	flame retardant	moisture resistant	pvc/halogen free
100% PES	woven fabric	transparent	D-shape	312	0,32	4-5	no	yes	no	yes	yes

solar heat and light control properties

design	colour	cell size (mm)	fabric width (cm)	Rv	Av	Tv	Rs	As	Ts	Tuv	g _{tot} value	Fc-value	FC-class
564-01	lily	25 mm	300	58%	14%	28%	58%	14%	28%	8%	0,42	0,6	3
564-02	ivory	25 mm	300	59%	19%	22%	59%	19%	22%	5%	0,41	0,59	2
564-03	sand	25 mm	300	51%	27%	22%	51%	27%	22%	7%	0,45	0,64	3
564-04	dawn	25 mm	300	44%	39%	17%	44%	39%	17%	6%	0,47	0,67	3
564-05	charcoal	25 mm	300	11%	80%	9%	11%	80%	9%	7%	0,6	0,85	4





Hudson

The weaving structure of transparent Honeycell fabric HUDSON has a stylish linen look and feel. The open structure diffuses the incoming light beautifully. Due to its 25 mm honeycomb structure, the fabric has an insulating effect and it contributes to energy savings throughout the year. HUDSON is available in a width of 300 cm, making it very suitable for larger dimensions. Hudson is available in ten stylish colours.

fabric specifications

composition	construction	transparency	form of cell	weight (g/m ²)	thick-ness (mm)	colour fastness (ISO 105 B02)	metalized	Oeko-Tex standard 100	flame retardant	moisture resistant	pvc/halogen free
100% PES	woven fabric	transparent	D-shape	294	0,26	4-5	no	yes	no	yes	yes

solar heat and light control properties

design	colour	cell size (mm)	fabric width (cm)	Rv	Av	Tv	Rs	As	Ts	Tuv	gtot value	Fc-value	FC-class
562-01	lily	25 mm	300	63%	10%	27%	60%	12%	28%	8%	0,40	0,57	2
562-02	ivory	25 mm	300	59%	17%	24%	56%	18%	26%	8%	0,41	0,59	2
562-03	sand	25 mm	300	59%	13%	28%	56%	15%	29%	10%	0,42	0,59	2
562-04	dawn	25 mm	300	55%	32%	13%	52%	34%	14%	7%	0,41	0,59	2
562-05	charcoal	25 mm	300	50%	40%	10%	48%	42%	10%	6%	0,42	0,61	3
562-06	rain	25 mm	300	58%	21%	21%	56%	21%	23%	8%	0,43	0,61	3
562-07	macaroon	25 mm	300	56%	20%	24%	54%	21%	25%	9%	0,42	0,60	3
562-08	capers	25 mm	300	54%	30%	16%	54%	27%	19%	7%	0,44	0,62	3
562-09	cinder	25 mm	300	52%	31%	17%	51%	29%	20%	10%	0,43	0,61	3
562-10	espresso	25 mm	300	55%	26%	19%	53%	27%	20%	9%	0,44	0,63	3



562-01



562-05



562-09



562-02



562-06



562-10



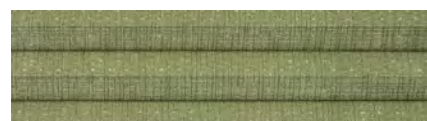
562-03



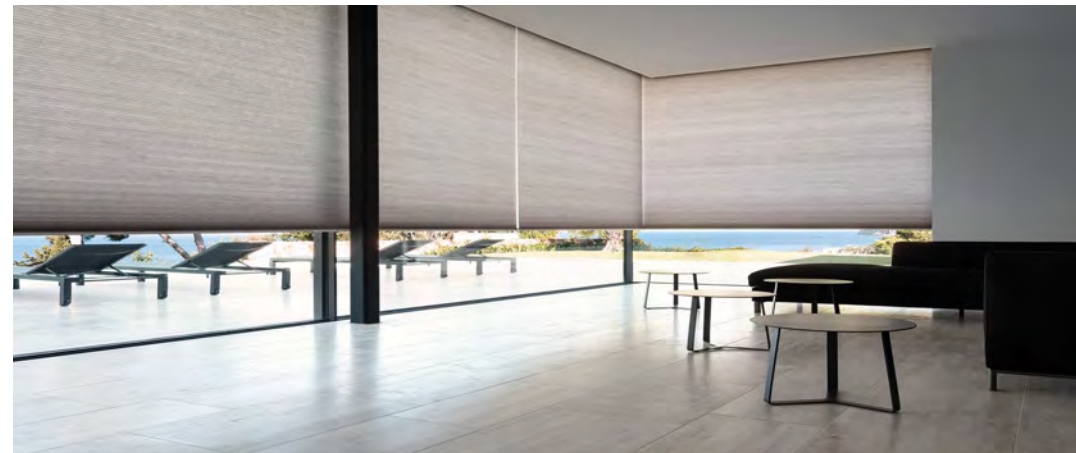
562-07



562-04



562-08



Milwaukee

Semi-transparent, non-woven Honeycell fabric Milwaukee has a refined, whitewash look. Thanks to its honeycomb structure, fabric Milwaukee has excellent insulating properties ensuring the heat to stay outside during summer and inside during winter. The seven natural and trendy colours in which fabric Milwaukee is available, perfectly suit modern as well as classic interiors.

fabric specifications

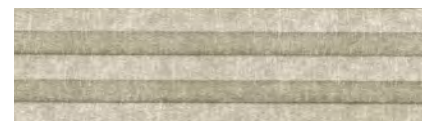
composition	construction	transparency	form of cell	weight (g/m ²)	thick-ness (mm)	colour fastness (ISO 105 B02)	metalized	Oeko-Tex standard 100	flame retardant	moisture resistant	pvc/halogen free
100% PES	spunlace non-woven fabric	semi-transparent	D-shape	138	0,17	4-5	no	yes	no	yes	yes

solar heat and light control properties

design	colour	cell size (mm)	fabric width (cm)	Rv	Av	Tv	Rs	As	Ts	Tuv	g _{tot} value	Fc-value	FC-class
770-01	limestone	25 mm	300	42%	36%	22%	41%	33%	26%	7%	0,48	0,68	3
770-02	cinder	25 mm	300	43%	46%	11%	42%	46%	12%	5%	0,47	0,67	3
770-03	asphalt	25 mm	300	41%	50%	9%	40%	49%	11%	4%	0,48	0,68	3
770-04	sandshell	25 mm	300	53%	20%	27%	51%	19%	30%	7%	0,44	0,62	3
770-05	rock	25 mm	300	48%	34%	18%	46%	33%	21%	7%	0,45	0,65	3
770-06	greige	25 mm	300	44%	42%	14%	43%	41%	16%	5%	0,47	0,67	3
770-07	etherea	25 mm	300	42%	41%	17%	41%	38%	21%	8%	0,48	0,68	3



770-01



770-04



770-07



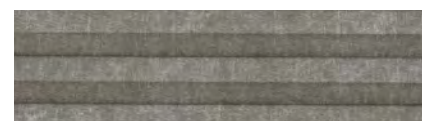
770-02



770-05



770-03



770-06



Burlington

Semi-transparent Honeycell fabric Burlington has the same quality as basic cloth Rioja. The fabric has a natural linen print with blended effect. Due to its 25 mm cellular structure and white backing, fabric Burlington has excellent insulation and reflection qualities. This makes the material the perfect combination of both functionality and atmosphere. Burlington is available in eight timeless, natural colour tones.

fabric specifications

composition	construction	transparency	form of cell	weight (g/m ²)	thick-ness (mm)	colour fastness (ISO 105 B02)	metalized	Oeko-Tex standard 100	flame retardant	moisture resistant	pvc/halogen free
100% PES	spunlace non-woven fabric + print	semi-transparent	D-shape	170	0,21	4-5	no	yes	no	yes	yes

solar heat and light control properties

design	colour	cell size (mm)	fabric width (cm)	Rv	Av	Tv	Rs	As	Ts	Tuv	g _{tot} value	Fc-value	FC-class
5540	cream	25 mm	300	68%	12%	20%	67%	12%	21%	-	0,36	0,52	2
5541	coffee	25 mm	300	62%	21%	17%	62%	17%	21%	-	0,39	0,55	2
5542	mist	25 mm	300	62%	21%	17%	62%	17%	21%	-	0,39	0,55	2
5543	charcoal	25 mm	300	62%	21%	17%	62%	17%	21%	-	0,39	0,55	2
5544	indigo	25 mm	300	62%	21%	17%	62%	17%	21%	-	0,39	0,55	2
5545	moss	25 mm	300	64%	16%	20%	64%	13%	23%	-	0,38	0,54	2
5548	sand	25 mm	300	68%	12%	20%	67%	12%	21%	-	0,36	0,52	2
5549	fossil	25 mm	300	68%	12%	20%	68%	10%	22%	-	0,36	0,52	2



5540



5543



5548



5541



5544



5549



5542



5545

Burlington BO

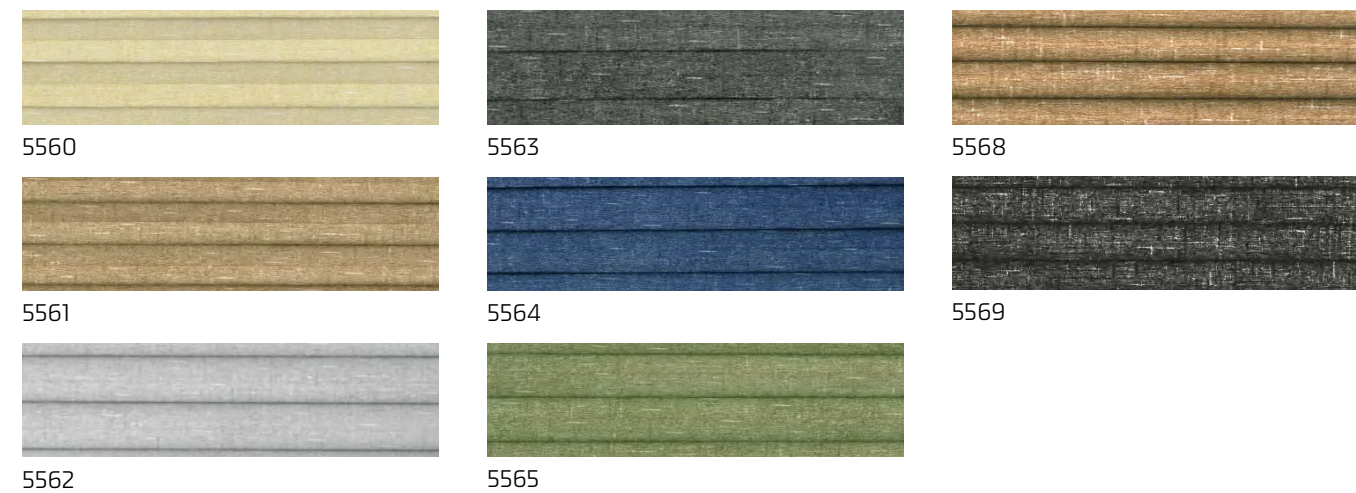
Black-out Honeycell fabric Burlington BO has the same quality as basic cloth Rioja. The fabric has a natural linen print with blended effect. Due to its 25 mm cellular structure and white backing, fabric Burlington BO has excellent insulation and reflection qualities. This makes the material the perfect combination between functionality and atmosphere. Burlington BO is available in eight natural colours, including neutral shades of beige. The fabric has a silver coating on the inside for additional insulation.

fabric specifications

composition	construction	transparency	form of cell	weight (g/m ²)	thick-ness (mm)	colour fastness (ISO 105 B02)	metalized	Oeko-Tex standard 100	flame retardant	moisture resistant	pvc/ halogen free
100% PES	spunlace non-woven film-laminated fabric + print	black-out	D-shape	192	0,15	4-5	yes	yes	no	yes	yes

solar heat and light control properties

design	colour	cell size (mm)	fabric width (cm)	Rv	Av	Tv	Rs	As	Ts	Tuv	g _{tot} value	Fc-value	FC-class
5560	cream	25 mm	300	72%	28%	0%	70%	30%	0%	0%	0,34	0,48	2
5561	coffee	25 mm	300	72%	28%	0%	70%	30%	0%	0%	0,34	0,48	2
5562	mist	25 mm	300	72%	28%	0%	70%	30%	0%	0%	0,34	0,48	2
5563	charcoal	25 mm	300	72%	28%	0%	70%	30%	0%	0%	0,34	0,48	2
5564	indigo	25 mm	300	72%	28%	0%	70%	30%	0%	0%	0,34	0,48	2
5565	moss	25 mm	300	72%	28%	0%	70%	30%	0%	0%	0,34	0,48	2
5568	sand	25 mm	300	72%	28%	0%	70%	30%	0%	0%	0,34	0,48	2
5569	black	25 mm	300	72%	28%	0%	70%	30%	0%	0%	0,34	0,48	2



Alicante

Semi-transparent Honeycell fabric Alicante is a non-woven quality with a special print, inspired by nature. The irregular stripe pattern adds an exclusive and decorative look and feel to this very functional fabric that beautifully matches contemporary interiors. Alicante is available in five natural colours. Due to the 25 mm honeycomb structure, the fabric has excellent insulating properties and it contributes to energy savings in any space.

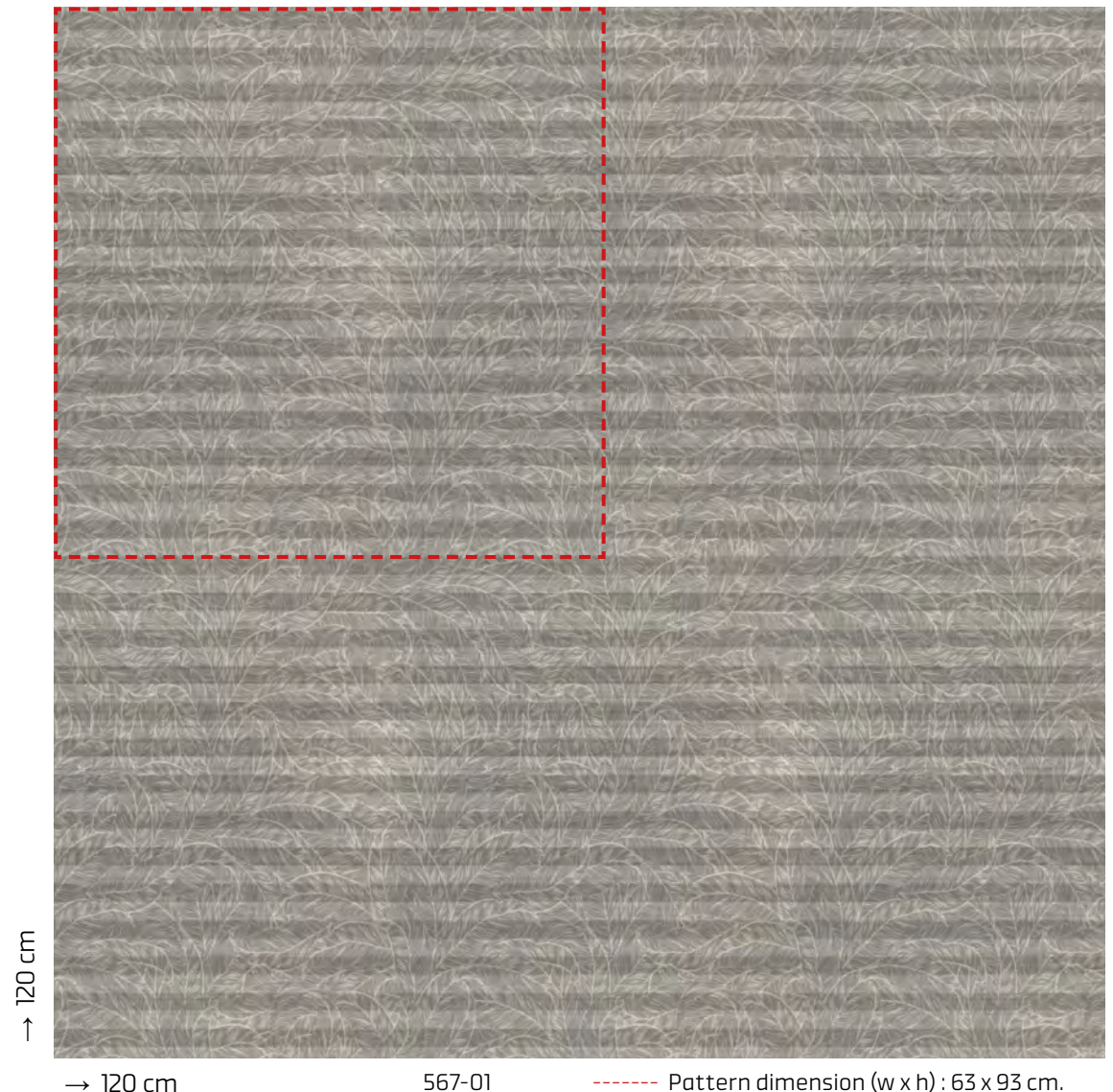
fabric specifications

composition	construction	transparency	form of cell	weight (g/m ²)	thick-ness (mm)	colour fastness (ISO 105 B02)	metalized	Oeko-Tex standard 100	flame retardant	moisture resistant	pvc/ halogen free
100% PES	pointbonded non-woven fabric + print	semi-transparent	D-shape	144	0,21	4-5	no	yes	no	yes	yes

solar heat and light control properties

design	colour	cell size (mm)	fabric width (cm)	Rv	Av	Tv	Rs	As	Ts	Tuv	g _{tot} value	Fc-value	FC-class
7450	sand	25 mm	300	53%	24%	23%	52%	21%	27%	4%	0,44	0,62	3
7451	mouse	25 mm	300	55%	14%	31%	53%	15%	32%	5%	0,44	0,62	3
7452	espresso	25 mm	300	31%	59%	10%	31%	55%	14%	5%	0,52	0,74	3
7456	humus	25 mm	300	57%	11%	32%	55%	8%	37%	9%	0,42	0,61	3
7457	storm	25 mm	300	53%	29%	18%	53%	20%	27%	5%	0,43	0,61	3





→ 120 cm

→ 120 cm

567-01

----- Pattern dimension (w x h) : 63 x 93 cm.



567-02



567-04



567-03



Dawson

Semi-transparent Honeycell fabric Dawson has the same quality as basic cloth Rioja. The fabric has a modern expressive print of leaves. Due to its 25 mm cellular structure and white backing, fabric Dawson has excellent insulation and reflection qualities. This makes the material the perfect combination of both functionality and atmosphere. Dawson 25mm is available in four colours.

fabric specifications

composition	construction	transparency	pattern dimension	form of cell	weight (g/m ²)	thickness (mm)	colour fastness (ISO 105 B02)	metalized	Oeko-Tex standard 100	flame retardant	moisture resistant	pvc/halogen free
100% PES	spunlace non-woven fabric + digital print	semi-transparent	63 x 63 cm	O-shape	167	0,26	4-5	no	yes	no	yes	yes

solar heat and light control properties

design	colour	cell size (mm)	fabric width (cm)	Rv	Av	Tv	Rs	As	Ts	Tuv	gtot value	Fc-value	FC-class
567-01	greige	25mm	250	69%	21%	10%	69%	14%	17%	7%	0,35	0,50	2
567-02	moon rock	25mm	250	60%	34%	6%	60%	33%	7%	-	0,39	0,56	2
567-03	cinder	25mm	250	66%	23%	11%	67%	15%	18%	8%	0,36	0,52	2
567-04	charcoal	25mm	250	60%	34%	6%	60%	33%	7%	-	0,39	0,56	2

CLASSIC LUXURY



Inspired by art, design and fashion, this collection captures the essence of classic luxury and showcases the exceptional Honeycell fabrics in rich, stylish tones.



Baltimore

Semi-transparent Honeycell fabric Baltimore is truly unique as it combines a white non-woven back side with a coloured textile front side. Due to the honeycomb structure, this non-woven/textile fabric has excellent insulating properties ensuring the heat to stay outside during summer and inside during winter. The Baltimore 25mm fabric offers both a maximum in functionality as well as a high quality, luxurious look and feel. Baltimore is available in six natural colours.

fabric specifications

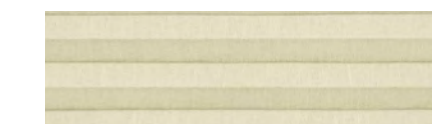
composition	construction	transparency	form of cell	weight (g/m ²)	thick-ness (mm)	colour fastness (ISO 105 B02)	metalized	Deko-Tex standard 100	flame retardant	moisture resistant	pvc/halogen free
100% PES	spunlace non-woven fabric + printed textile front side	semi-transparent	D-shape	235	0,37	4-5	no	yes	no	yes	yes

solar heat and light control properties

design	colour	cell size (mm)	fabric width (cm)	Rv	Av	Tv	Rs	As	Ts	Tuv	gtot value	Fc-value	FC-class
563-01	white	25 mm	300	62%	6%	32%	59%	9%	32%	12%	0,40	0,58	2
563-02	cream	25 mm	300	63%	6%	31%	59%	11%	30%	8%	0,41	0,58	2
563-03	sand	25 mm	300	58%	12%	30%	56%	13%	31%	9%	0,42	0,60	3
563-04	macca	25 mm	300	58%	17%	25%	57%	14%	29%	10%	0,41	0,59	2
563-05	ash	25 mm	300	56%	29%	15%	54%	29%	17%	7%	0,41	0,59	2
563-06	iron	25 mm	300	59%	19%	22%	57%	19%	24%	6%	0,42	0,60	3



563-01



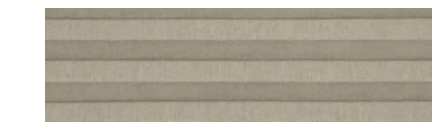
563-03



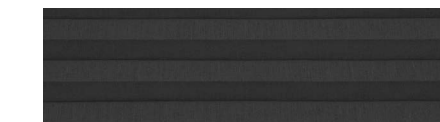
563-05



563-02



563-04



563-06



Oklahoma

The frontside and backside of this so-called full-tone taffeta fabric have identical colours. The piece-dyed woven Oklahoma fabric comes in twelve contemporary full-tone colours. The tightly-woven fabric in combination with the 25 mm honeycomb structure, makes that Oklahoma has an insulating effect that contributes to energy savings throughout the year.

fabric specifications

composition	construction	transparency	form of cell	weight (g/m ²)	thick-ness (mm)	colour fastness (ISO 105 B02)	metalized	Oeko-Tex standard 100	flame retardant	moisture resistant	pvc/halogen free
100% PES	piece dyed woven fabric	non-transparent	O-shape	220	0,17	5-7	no	yes	no	yes	yes

solar heat and light control properties

design	colour	cell size (mm)	fabric width (cm)	Rv	Av	Tv	Rs	As	Ts	Tuv	gtot value	Fc-value	FC-class
560-01	white	25 mm	250	66%	5%	29%	63%	8%	29%	10%	0,39	0,55	2
560-02	bright	25 mm	250	65%	12%	23%	64%	12%	24%	6%	0,38	0,54	2
560-03	cloud	25 mm	250	57%	23%	20%	59%	18%	23%	5%	0,40	0,57	2
560-04	greige	25 mm	250	29%	65%	6%	46%	37%	17%	2%	0,46	0,65	3
560-05	nougat	25 mm	250	13%	86%	1%	39%	45%	16%	1%	0,48	0,69	3
560-06	sienna	25 mm	250	6%	94%	0%	39%	47%	14%	0%	0,48	0,69	3
560-07	moss	25 mm	250	8%	92%	0%	37%	50%	13%	0%	0,49	0,70	3
560-08	artic	25 mm	250	6%	94%	0%	32%	55%	13%	0%	0,51	0,73	3
560-09	midnight	25 mm	250	5%	95%	0%	32%	57%	11%	0%	0,51	0,73	3
560-10	mist	25 mm	250	39%	51%	10%	51%	30%	19%	3%	0,43	0,62	3
560-11	grey	25 mm	250	18%	80%	2%	41%	45%	14%	1%	0,47	0,67	3
560-12	cinder	25 mm	250	7%	93%	0%	33%	54%	13%	0%	0,51	0,72	3

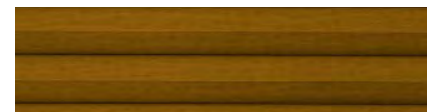




570-08



570-01



570-05



570-10



570-02



570-06



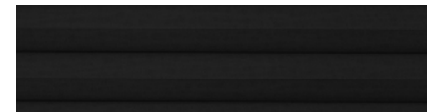
570-11



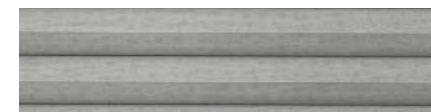
570-03



570-07



570-12



570-04



570-09

Oklahoma B0

The frontside and backside of this so-called full-tone taffeta black-out fabric have identical colours. The piece-dyed woven Oklahoma B0 fabric comes in twelve contemporary full-tone colours. The tightly-woven fabric has a silver coating on the inside for additional insulation and to prevent light from shining through the fabric.

fabric specifications

composition	construction	transparency	form of cell	weight (g/m ²)	thick-ness (mm)	colour fastness (ISO 105 B02)	metalized	Oeko-Tex standard 100	flame retardant	moisture resistant	pvc/halogen free
100% PES	piece-dyed film-laminated woven fabric	black-out	O-shape	284	0,18	5-7	yes	yes	no	yes	yes

solar heat and light control properties

design	colour	cell size (mm)	fabric width (cm)	Rv	Av	Tv	Rs	As	Ts	Tuv	gtot value	Fc-value	FC-class
570-01	white	25 mm	250	16%	84%	0%	45%	55%	0%	0%	0,45	0,64	3
570-02	bright	25 mm	250	16%	84%	0%	45%	55%	0%	0%	0,45	0,64	3
570-03	cloud	25 mm	250	16%	84%	0%	45%	55%	0%	0%	0,45	0,64	3
570-04	greige	25 mm	250	16%	84%	0%	45%	55%	0%	0%	0,45	0,64	3
570-05	nougat	25 mm	250	16%	84%	0%	45%	55%	0%	0%	0,45	0,64	3
570-06	sienna	25 mm	250	16%	84%	0%	45%	55%	0%	0%	0,45	0,64	3
570-07	moss	25 mm	250	16%	84%	0%	45%	55%	0%	0%	0,45	0,64	3
570-08	artic	25 mm	250	16%	84%	0%	45%	55%	0%	0%	0,45	0,64	3
570-09	midnight	25 mm	250	16%	84%	0%	45%	55%	0%	0%	0,45	0,64	3
570-10	mist	25 mm	250	16%	84%	0%	45%	55%	0%	0%	0,45	0,64	3
570-11	grey	25 mm	250	16%	84%	0%	45%	55%	0%	0%	0,45	0,64	3
570-12	cinder	25 mm	250	16%	84%	0%	45%	55%	0%	0%	0,45	0,64	3



Edmonton

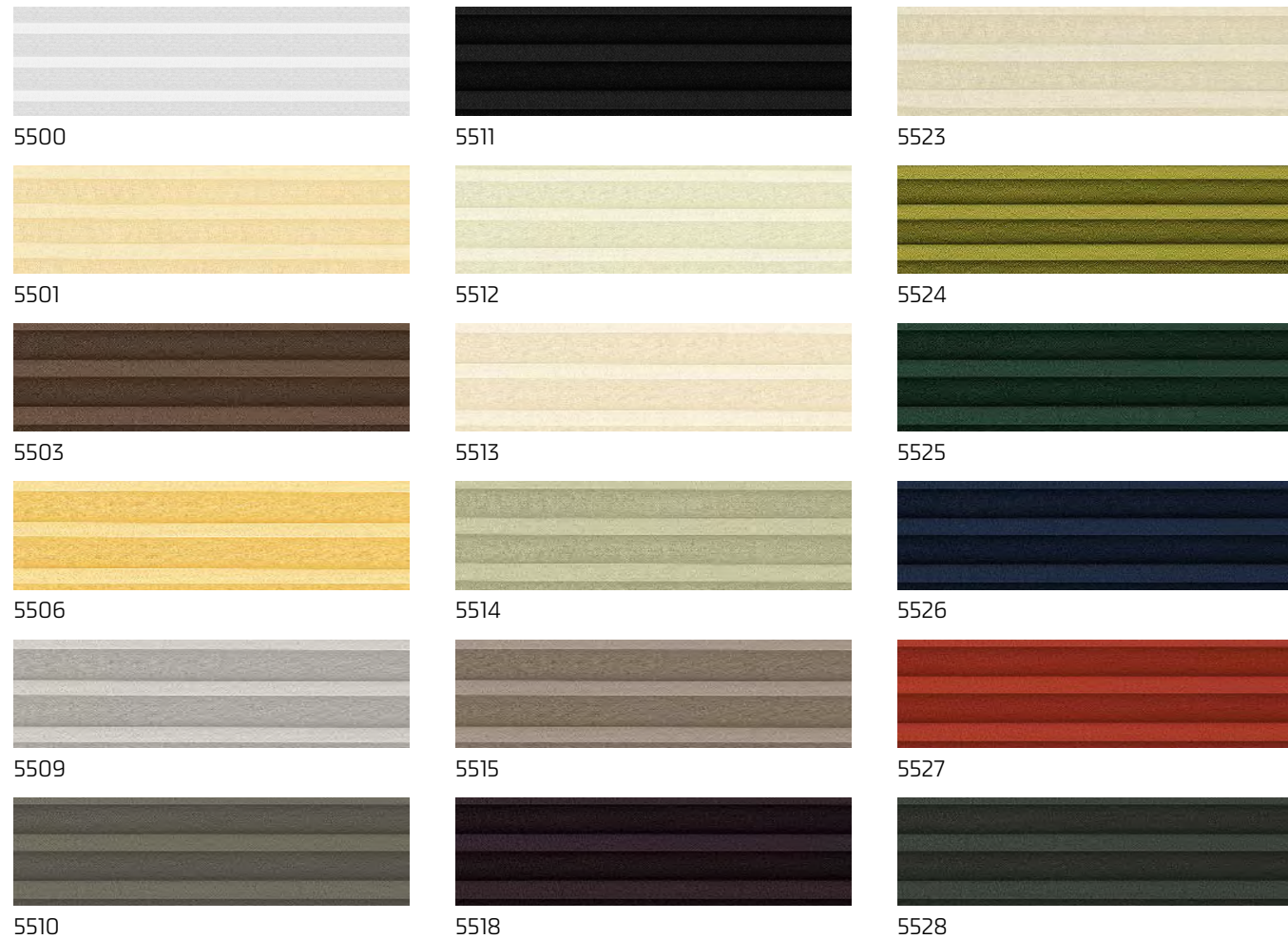
Non-transparent Honeycell fabric Edmonton has a high-quality weaving structure with a timeless, classic feel and subtle satin look. The front-side and back of this fabric have identical colours. Because of the honeycomb structure, the fabric has an insulating effect. It therefore contributes to energy savings throughout the year. Fulltone fabric Edmonton is available in a range of exclusive colours that create a feeling of luxury.

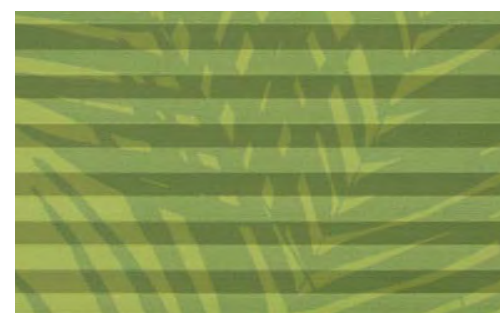
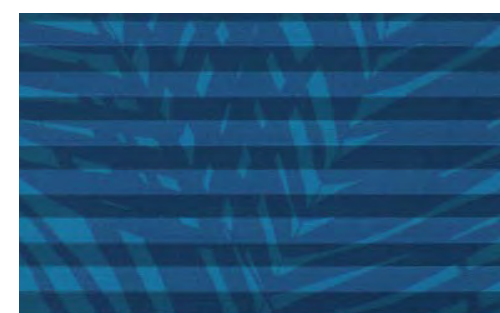
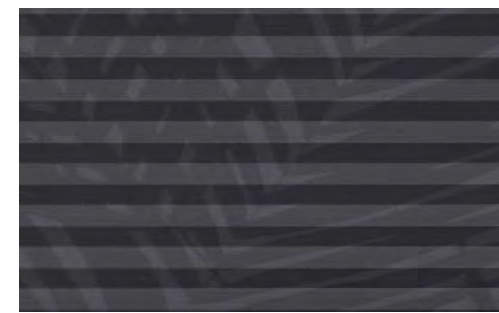
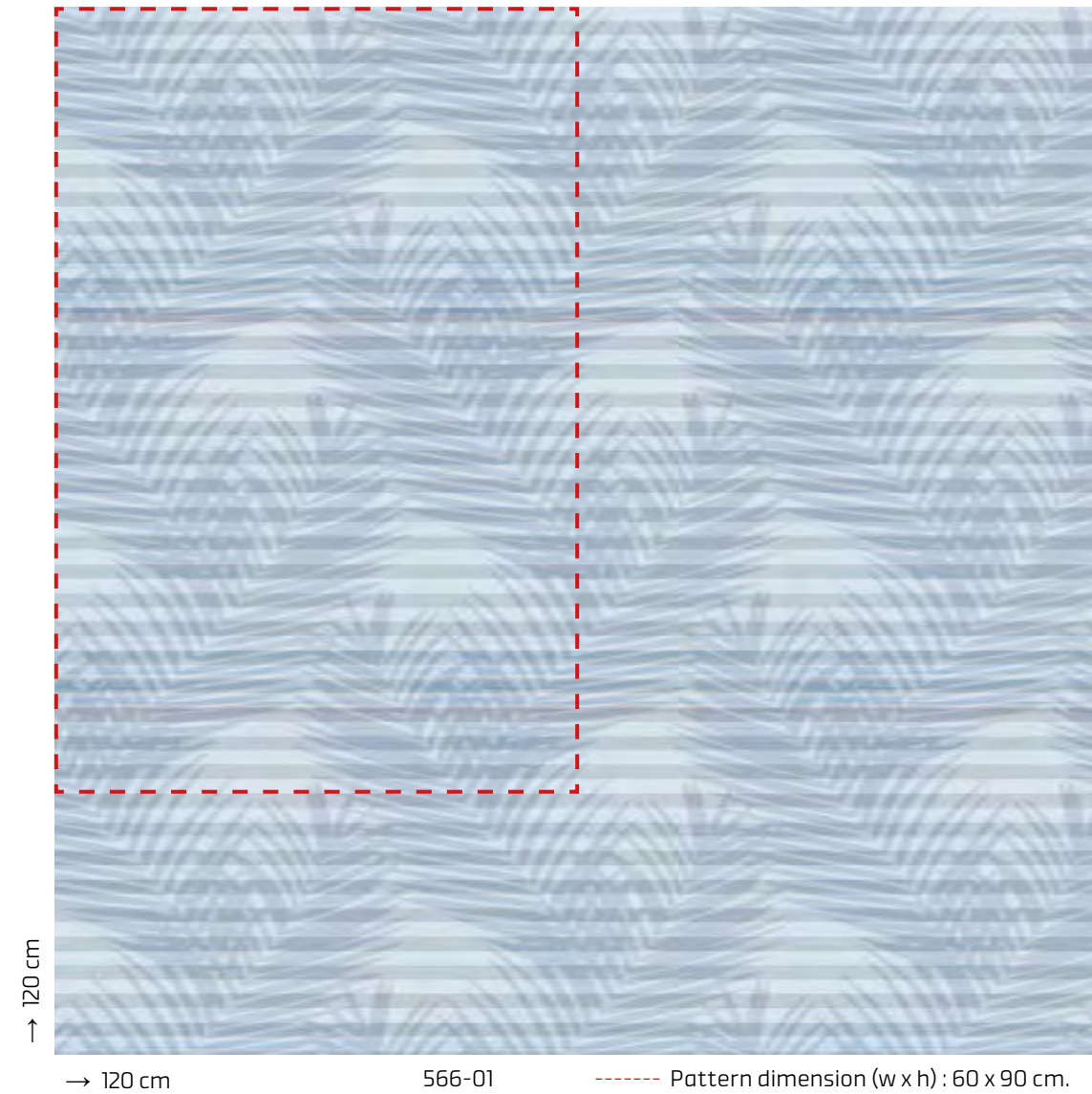
fabric specifications

composition	construction	transparency	form of cell	weight (g/m ²)	thick-ness (mm)	colour fastness (ISO 105 B02)	metalized	Oeko-Tex standard 100	flame retardant	moisture resistant	pvc/halogen free
100% PES	woven fabric	non-transparent	O-shape	206	0,14	5-7	no	yes	no	yes	yes

solar heat and light control properties

design	colour	cell size (mm)	fabric width (cm)	Rv	Av	Tv	Rs	As	Ts	Tuv	gtot value	Fc-value	FC-class
5500	white	25 mm	250	61%	10%	29%	61%	10%	29%	-	0,40	0,57	2
5501	vanilla	25 mm	250	56%	27%	17%	63%	11%	26%	4%	0,38	0,54	2
5503	brown	25 mm	250	13%	85%	2%	27%	66%	7%	1%	0,55	0,79	3
5506	yellow	25 mm	250	52%	31%	17%	57%	19%	24%	2%	0,41	0,58	2
5509	grey	25 mm	250	36%	54%	10%	50%	31%	19%	3%	0,44	0,63	3
5510	dark grey	25 mm	250	18%	79%	3%	38%	47%	15%	1%	0,49	0,70	3
5511	black	25 mm	250	3%	96%	1%	31%	55%	14%	1%	0,52	0,74	3
5512	ivory	25 mm	250	55%	23%	22%	62%	9%	29%	7%	0,38	0,55	2
5513	beige	25 mm	250	57%	14%	29%	56%	15%	29%	8%	0,42	0,60	3
5514	mouse grey	25 mm	250	38%	48%	14%	52%	28%	20%	6%	0,43	0,62	3
5515	light grey	25 mm	250	22%	74%	4%	43%	41%	16%	3%	0,48	0,68	3
5518	aubergine	25 mm	250	3%	96%	1%	33%	51%	16%	1%	0,53	0,75	3
5523	cream	25 mm	250	62%	16%	22%	62%	16%	22%	8%	0,38	0,55	2
5524	moss	25 mm	250	25%	71%	4%	25%	71%	4%	1%	0,47	0,68	3
5525	forest	25 mm	250	5%	95%	0%	5%	95%	0%	0%	0,52	0,74	3
5526	midnight	25 mm	250	5%	95%	0%	5%	95%	0%	0%	0,51	0,74	3
5527	sienna	25 mm	250	8%	90%	2%	8%	90%	2%	0%	0,50	0,71	3
5528	charcoal	25 mm	250	13%	87%	0%	13%	87%	0%	0%	0,48	0,68	3





Yukon

Semi-transparent Honeycell fabric Yukon has the same quality as basic cloth Rioja. The fabric has a modern expressive print of palm leaves. Due to its 25 mm cellular structure and white backing, fabric Yukon has excellent insulation and reflection qualities. This makes the material the perfect combination of both functionality and atmosphere. Yukon 25mm is available in five colours.

fabric specifications

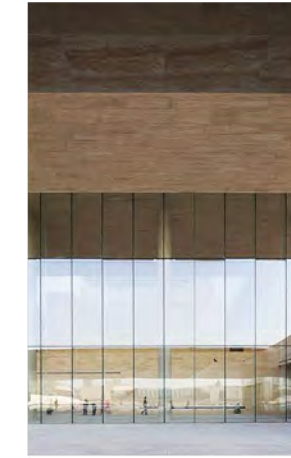
composition	construction	transparency	pattern dimension	form of cell	weight (g/m ²)	thickness (mm)	colour fastness (ISO 105 B02)	metalized	Oeko-Tex standard 100	flame retardant	moisture resistant	pvc/halogen free
100% PES	spun-lace non-woven fabric + digital print	semi-transparent	60 x 90 cm	O-shape	167	0,26	4-5	no	yes	no	yes	yes

solar heat and light control properties

design	colour	cell size (mm)	fabric width (cm)	Rv	Av	Tv	Rs	As	Ts	Tuv	gtot value	Fc-value	FC-class
566-01	dove	25mm	250	61%	8%	31%	61%	7%	32%	-	0,40	0,57	2
566-02	charcoal	25mm	250	60%	34%	6%	60%	33%	7%	-	0,39	0,56	2
566-03	aubergine	25mm	250	60%	34%	6%	60%	33%	7%	-	0,39	0,56	2
566-04	malibu	25mm	250	60%	34%	6%	60%	33%	7%	-	0,39	0,56	2
566-05	lime	25mm	250	64%	16%	20%	64%	13%	23%	-	0,38	0,54	2

FUNCTION

All fabrics in this collection have functionality at their core, underpinned with durability or flame-retardant qualities. The collection is ideal for the contract market and is presented in a modern palette of architectural colours that have universal appeal.



Palma 20 mm

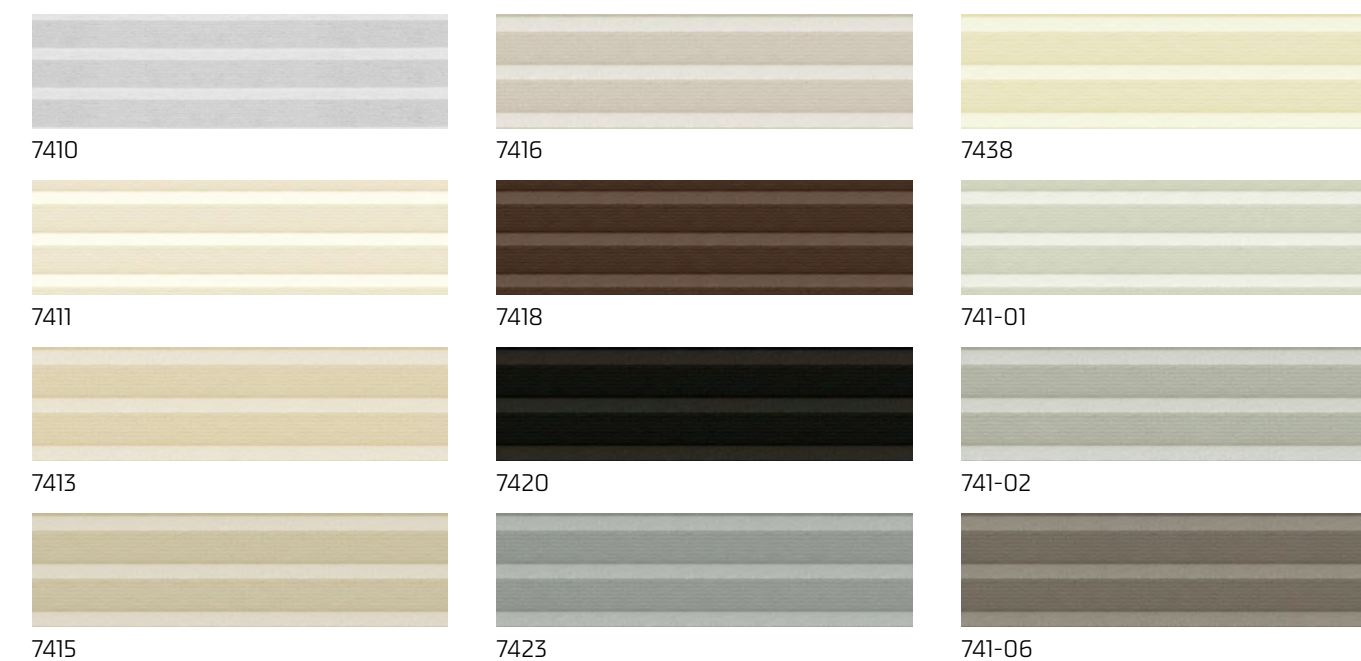
The insulating honeycomb structure combined with a reflecting white backside makes Palma an essential article for every functional collection. In addition to the standard 25 mm single-cell variety, this non-woven Honeycell fabric is also available in a unique 20 mm single-cell variety. Both varieties are offered in a width of no less than 300 cm. It makes Palma ideal for larger windows; even with larger dimensions the fabric folds into a thin stack. The 20 mm variety is available in 12 colours.

fabric specifications

composition	construction	transparency	form of cell	weight (g/m ²)	thick-ness (mm)	colour fastness (ISO 105 B02)	metalized	Oeko-Tex standard 100	flame retardant	moisture resistant	pvc/halogen free
100% PES	pointbonded non-woven fabric	semi-transparent	D-shape	150	0,21	4-5	no	yes	no	yes	yes

solar heat and light control properties

design	colour	cell size (mm)	fabric width (cm)	Rv	Av	Tv	Rs	As	Ts	Tuv	g _{tot} value	Fc-value	FC-class
7410	snow white	20 mm	300	54%	12%	34%	51%	14%	35%	7%	0,44	0,63	3
7411	pearl	20 mm	300	55%	14%	31%	53%	15%	32%	5%	0,44	0,62	3
7413	sand	20 mm	300	55%	14%	31%	53%	15%	32%	5%	0,44	0,62	3
7415	dune	20 mm	300	53%	24%	23%	52%	21%	27%	4%	0,44	0,62	3
7416	dawn	20 mm	300	55%	14%	31%	53%	15%	32%	5%	0,44	0,62	3
7418	coffee	20 mm	300	31%	59%	10%	31%	55%	14%	5%	0,52	0,74	3
7420	raven	20 mm	300	31%	59%	10%	31%	55%	14%	5%	0,52	0,74	3
7423	mouse	20 mm	300	53%	24%	23%	52%	21%	27%	4%	0,44	0,62	3
7438	essence	20 mm	300	55%	14%	31%	53%	15%	32%	5%	0,44	0,62	3
741-01	snow	20 mm	300	61%	5%	34%	57%	8%	35%	7%	0,42	0,59	3
741-02	ash	20 mm	300	54%	17%	29%	53%	14%	33%	8%	0,43	0,62	3
741-06	dust	20 mm	300	54%	19%	27%	49%	32%	19%	6%	0,44	0,63	3



Palma BO 20 mm

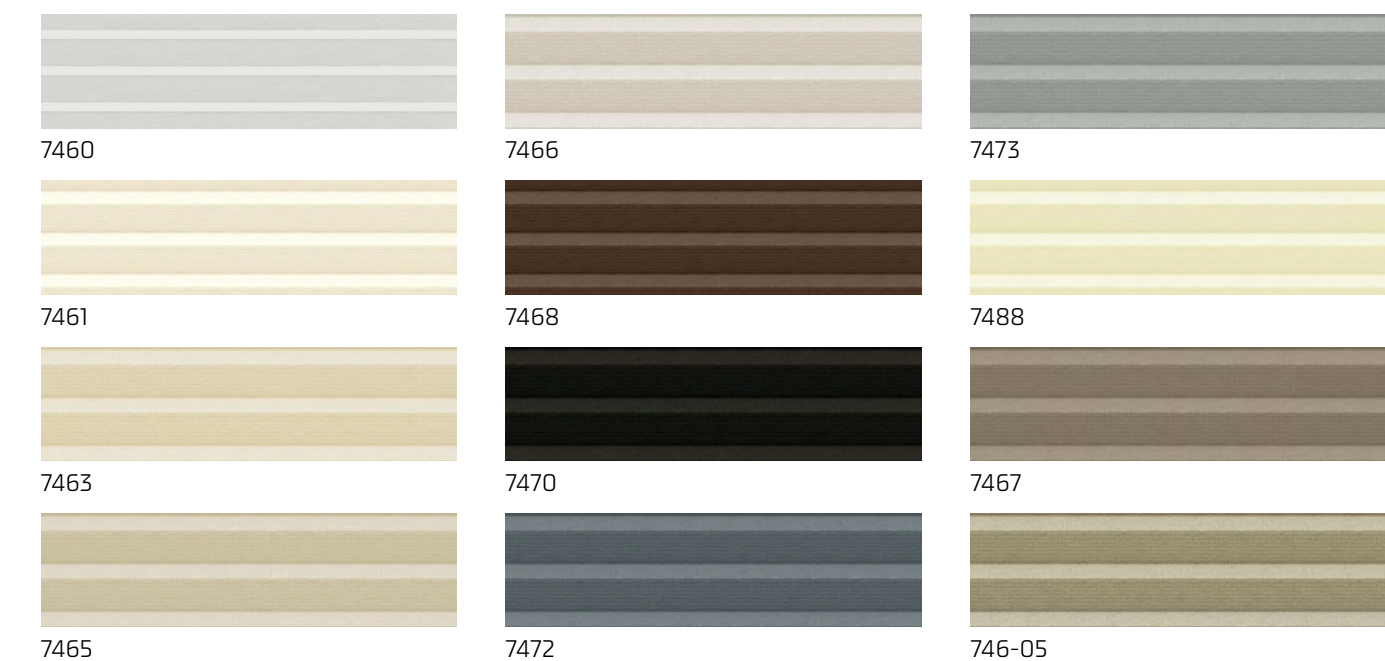
The insulating honeycomb structure combined with a reflecting white backside makes 100% blackout fabric Palma BO an essential article for every functional collection. The insulating quality of this non-woven fabric is enhanced by the silver coating on the inside of the cells. In addition to in a 25 mm single-cell variety, Palma BO is also available in a unique 20 mm variety. Both varieties are available in a width of no less than 300 cm. making the fabric ideal for larger windows; even with larger dimensions the fabric folds into a thin stack. The 20 mm variety is available in 12 colours.

fabric specifications

composition	construction	transparency	form of cell	weight (g/m ²)	thick-ness (mm)	colour fastness (ISO 105 B02)	metalized	Oeko-Tex standard 100	flame retardant	moisture resistant	pvc/halogen free
100% PES	pointbonded non-woven film-laminated fabric	black-out	D-shape	164	0,18	4-5	yes	yes	no	yes	yes

solar heat and light control properties

design	colour	cell size (mm)	fabric width (cm)	Rv	Av	Tv	Rs	As	Ts	Tuv	g _{tot} value	Fc-value	FC-class
7460	snow white	20 mm	300	71%	29%	0%	70%	30%	0%	0%	0,34	0,49	2
7461	pearl	20 mm	300	71%	29%	0%	70%	30%	0%	0%	0,34	0,49	2
7463	sand	20 mm	300	71%	29%	0%	70%	30%	0%	0%	0,34	0,49	2
7465	dune	20 mm	300	71%	29%	0%	70%	30%	0%	0%	0,34	0,49	2
7466	dawn	20 mm	300	71%	29%	0%	70%	30%	0%	0%	0,34	0,49	2
7468	coffee	20 mm	300	71%	29%	0%	70%	30%	0%	0%	0,34	0,49	2
7470	raven	20 mm	300	71%	29%	0%	70%	30%	0%	0%	0,34	0,49	2
7472	steel	20 mm	300	71%	29%	0%	70%	30%	0%	0%	0,34	0,49	2
7473	mouse	20 mm	300	71%	29%	0%	70%	30%	0%	0%	0,34	0,49	2
7488	essence	20 mm	300	71%	29%	0%	70%	30%	0%	0%	0,34	0,49	2
7467	ash	20 mm	300	71%	29%	0%	70%	30%	0%	0%	0,34	0,49	2
746-05	concrete	20 mm	300	71%	29%	0%	70%	30%	0%	0%	0,34	0,49	2





Pittsburgh 20 mm

Semi-transparent Honeycell fabric Pittsburgh combines an attractive, modern colour pallet with a maximum of functionality. Due to the honeycomb structure, this non-woven 20mm fabric has excellent insulating properties ensuring the heat to stay outside during summer and inside during winter. Pittsburgh 20mm is available in six natural colours.

fabric specifications

composition	construction	transparency	form of cell	weight (g/m ²)	thick-ness (mm)	colour fastness (ISO 105 B02)	metalized	Oeko-Tex standard 100	flame retardant	moisture resistant	pvc/ halogen free
100% PES	spunlace non-woven fabric	semi-transparent	D-shape	151	0,18	4-5	no	yes	no	yes	yes

solar heat and light control properties

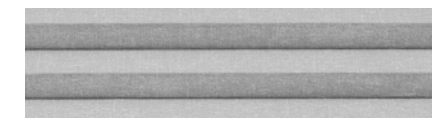
design	colour	cell size (mm)	fabric width (cm)	Rv	Av	Tv	Rs	As	Ts	Tuv	g _{tot} value	Fc-value	FC-class
750-01	snow	20 mm	300	54%	8%	38%	52%	10%	38%	16%	0,44	0,63	3
750-03	cloud	20 mm	300	61%	5%	34%	58%	8%	34%	7%	0,41	0,59	2
750-04	sand	20 mm	300	58%	16%	26%	55%	17%	28%	6%	0,42	0,60	3
750-07	greige	20 mm	300	57%	24%	19%	55%	23%	22%	4%	0,42	0,60	3
750-09	storm	20 mm	300	53%	39%	8%	51%	40%	9%	3%	0,43	0,61	3
750-12	dove	20 mm	300	55%	24%	21%	53%	22%	25%	5%	0,43	0,61	3



750-01



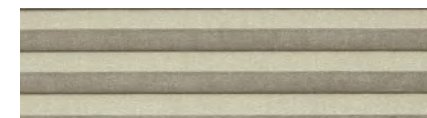
750-04



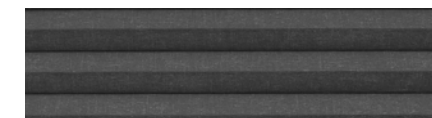
750-12



750-03



750-07



750-09

Pittsburgh BO 20 mm

Black-out Honeycell fabric Pittsburgh combines an attractive, modern colour pallet with a maximum of functionality. Due to the honeycomb structure, this non-woven 20mm fabric has excellent insulating properties ensuring the heat to stay outside during summer and inside during winter. The smaller cell size allows construction in tight spaces such as on sliding panels or glass doors . Pittsburgh BO 20mm is available in six natural colours.

fabric specifications

composition	construction	transparency	form of cell	weight (g/m ²)	thick-ness (mm)	colour fastness (ISO 105 B02)	metalized	Oeko-Tex standard 100	flame retardant	moisture resistant	pvc/ halogen free
100% PES	spun-lace non-woven film-laminated fabric	black-out	D-shape	186	0,17	4-5	yes	yes	no	yes	yes

solar heat and light control properties

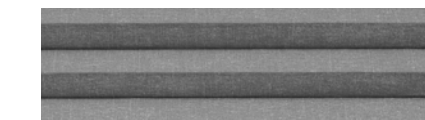
design	colour	cell size (mm)	fabric width (cm)	Rv	Av	Tv	Rs	As	Ts	Tuv	g _{tot} value	Fc-value	FC-class
760-01	snow	20 mm	300	68%	32%	0%	68%	32%	0%	-	0,35	0,49	2
760-02	bright	20 mm	300	68%	32%	0%	68%	32%	0%	-	0,35	0,49	2
760-03	melon	20 mm	300	68%	32%	0%	68%	32%	0%	-	0,35	0,49	2
760-06	dove	20 mm	300	68%	32%	0%	68%	32%	0%	-	0,35	0,49	2
760-10	charcoal	20 mm	300	68%	32%	0%	68%	32%	0%	-	0,35	0,49	2
760-11	cinder	20 mm	300	68%	32%	0%	68%	32%	0%	-	0,35	0,49	2



760-01



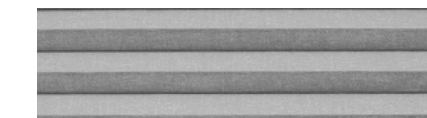
760-03



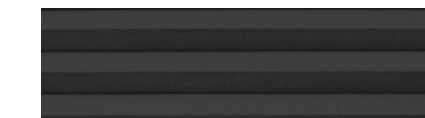
760-11



760-02



760-06



760-10



Atlanta FR

Flame retardant Honeycell fabric Atlanta FR is a refined non-woven quality that filters the light beautifully. This semi-transparent fabric is available in eight natural and four bright tones that match any interior. Due to the 25 mm honeycomb structure, the fabric has an insulating function and it contributes to a comfortable indoor climate and energy savings in office or home.

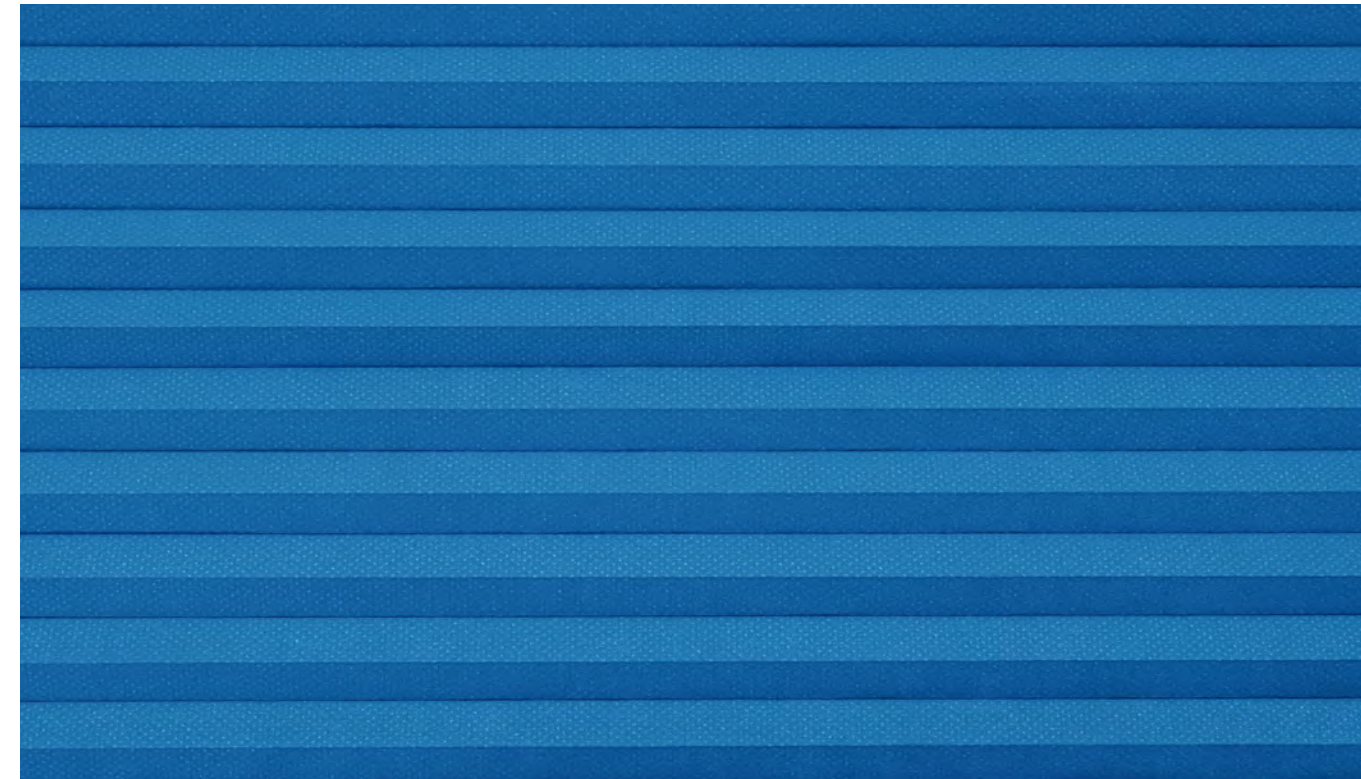
fabric specifications

composition	construction	transparency	form of cell	weight (g/m²)	thick-ness (mm)	colour fastness (ISO 105 B02)	metalized	Oeko-Tex standard 100	flame retardant	moisture resistant	pvc/halogen free
100% PES	pointbonded non-woven fabric	semi-transparent	D-shape	170	0,23	4-5	no	no	yes	yes	yes

solar heat and light control properties

design	colour	cell size (mm)	fabric width (cm)	Rv	Av	Tv	Rs	As	Ts	Tuv	gtot value	Fc-value	FC-class
7560	white	25 mm	300	49%	18%	33%	46%	14%	40%	17%	0,47	0,66	3
7563	beige	25 mm	300	47%	17%	36%	48%	12%	40%	18%	0,46	0,65	3
7570	grey	25 mm	300	41%	32%	27%	47%	20%	33%	14%	0,46	0,65	3
7571	pebble	25 mm	300	58%	15%	27%	57%	12%	31%	8%	0,42	0,59	2
7572	lemon	25 mm	300	63%	8%	29%	60%	12%	28%	3%	0,40	0,57	2
7573	nectarine	25 mm	300	56%	29%	15%	57%	18%	25%	3%	0,41	0,59	2
7574	smoke	25 mm	300	53%	38%	9%	52%	35%	13%	4%	0,43	0,61	3
7575	jasmine	25 mm	300	58%	20%	22%	55%	22%	23%	4%	0,42	0,60	3
7576	dust	25 mm	300	57%	23%	20%	57%	16%	27%	7%	0,41	0,58	2
7577	regatta	25 mm	300	55%	35%	10%	55%	26%	19%	4%	0,41	0,59	2
7578	fossil	25 mm	300	56%	19%	25%	56%	16%	28%	7%	0,42	0,60	3
7590	mercury	25 mm	300	48%	24%	28%	47%	21%	32%	13%	0,46	0,65	3

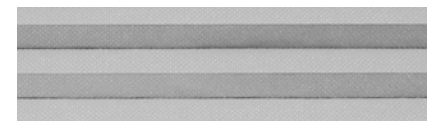




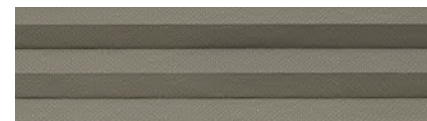
7677



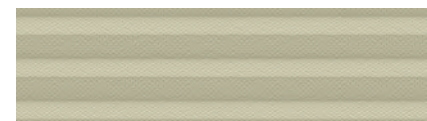
7660



7671



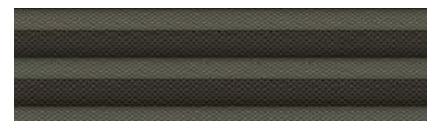
7676



7662



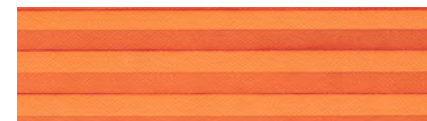
7672



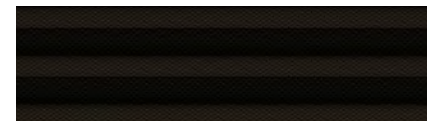
7691



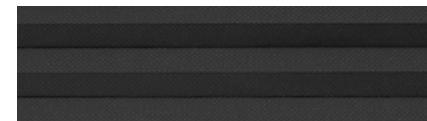
7664



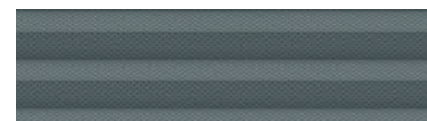
7673



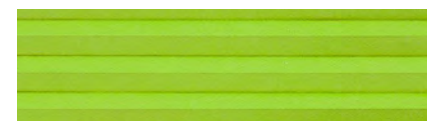
7669



7674



7670



7675

Atlanta FR BO

Honeycell fabric Atlanta FR BO is not only flame retardant, it is also black-out. This refined non-woven quality has a 25 mm honeycomb structure. The cells have a white coating on the inside that not only blocks out the light but also provides insulation. It allows the fabric to optimally contribute to a comfortable indoor climate and energy savings during both winter and summer. Atlanta FR BO is available in nine natural tones and 4 bright colours that match any interior.


fabric specifications

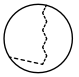
composition	construction	transparency	form of cell	weight (g/m ²)	thick-ness (mm)	colour fastness (ISO 105 B02)	metalized	Oeko-Tex standard 100	flame retardant	moisture resistant	pvc/halogen free
100% PES	pointbonded non-woven film-laminated fabric	black-out	D-shape	250	0,21	4-5	yes	no	yes	yes	yes


solar heat and light control properties


design	colour	cell size (mm)	fabric width (cm)	Rv	Av	Tv	Rs	As	Ts	Tuv	gtot value	Fc-value	FC-class
7660	white	25 mm	300	67%	33%	0%	67%	33%	0%	0%	0,35	0,50	2
7662	sand	25 mm	300	67%	33%	0%	67%	33%	0%	0%	0,35	0,50	2
7664	brown	25 mm	300	67%	33%	0%	67%	33%	0%	0%	0,35	0,50	2
7669	black	25 mm	300	67%	33%	0%	67%	33%	0%	0%	0,35	0,50	2
7670	grey	25 mm	300	67%	33%	0%	67%	33%	0%	0%	0,35	0,50	2
7671	pebble	25 mm	300	67%	33%	0%	67%	33%	0%	0%	0,35	0,50	2
7672	lemon	25 mm	300	67%	33%	0%	67%	33%	0%	0%	0,35	0,50	2
7673	nectarine	25 mm	300	67%	33%	0%	67%	33%	0%	0%	0,35	0,50	2
7674	smoke	25 mm	300	67%	33%	0%	67%	33%	0%	0%	0,35	0,50	2
7675	jasmine	25 mm	300	67%	33%	0%	67%	33%	0%	0%	0,35	0,50	2
7676	dust	25 mm	300	67%	33%	0%	67%	33%	0%	0%	0,35	0,50	2
7677	regatta	25 mm	300	67%	33%	0%	67%	33%	0%	0%	0,35	0,50	2
7691	charcoal	25 mm	300	67%	33%	0%	67%	33%	0%	0%	0,35	0,50	2


explanation technical specifications

 **light reflection (DIN EN 410)**
Percentage of sun light that is reflected by the fabric.
The higher the percentage the better the light reflection.


 **light fastness (DIN EN ISO 105-B02)**
Light fastness is the degree of fading-resistance of a colour by daylight. Colours react different on light-fading. Therefore light fastness is judged on a scale of 1 to 8, where 8 is most fade-resistant.

 **light absorption (DIN EN 410)**
Percentage of sun light that is absorbed by the fabric.
The higher the percentage the more the light will be absorbed.


 **flame retardance**
Flame retardant fabrics are fabrics which reduce flammability.

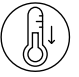
 **light transmission (DIN EN 410)**
Percentage of sun light that comes through the fabric.
The higher the percentage the more visible light will get into the room.


B1 Defines the fabric as flame retardant according to the German Fire Protection Standard (DIN 4102-1) and may be used in official buildings. B1 is more common in Central and North Europe.

 **solar reflection (DIN EN 410)**
Percentage of sun energy that is reflected by the fabric.
The higher the percentage the better the energy reflection.

M1 Defines the fabric as flame retardant according to the French Fire Protection Standard and may be used in official buildings. M1 is more common in South Europe.


 **solar absorption (DIN EN 410)**
Percentage of sun energy that is absorbed by the fabric.
The higher the percentage the more the energy will be absorbed.


 **Fc value (DIN EN 13363-1)**
Reduction factor (from 0-1) of the fabric concerning solar energy. The lower the factor of the fabric the better the reduction of solar energy. Calculations have been made with the following glass values: U-value = 1,6, g-value = 0,70

 **solar transmission (DIN EN 410)**
Percentage of sun energy that comes through the fabric.
The higher the percentage the more solar energy will get into the room.

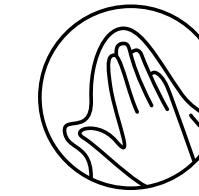
Calculation: $F_c \text{ value} = g_{tot} \text{ value} / g \text{ value of window.}$

class	Fc-values classes	improvement thermal comfort of the room
①	0,20 - 0,39	very high
②	0,40 - 0,59	high
③	0,60 - 0,79	medium
④	0,80 - 0,89	low
⑤	> 0,90	neutral

 **uv transmission (DIN EN 410)**
Percentage of UV light that comes through the fabric.
The higher the percentage the more UV will get into the room.

 **gtot value (DIN EN 13363-1)**
The total transmission value of solar energy (from 0-1) through a combination of window and sun protection.
The lower the value the less solar energy comes through the window and sun protection.

general maintenance instructions



For regular maintenance, use a soft feather duster or vacuum-cleaner with a soft brush at the lowest suction intensity. Moist can cause stains that are difficult to remove. Therefore, please make sure the fabric is or does not get in touch with wet or humid elements. Remove insect excrement on the fabric with a soft brush as soon as possible to avoid corrosion of the metal layer.

handling and cleaning metalized coating

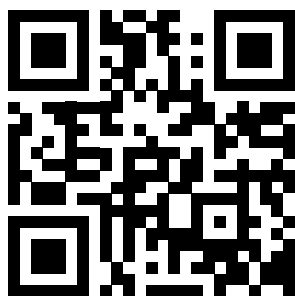
Metallized and black-out coated fabrics are not washable. These fabrics can be cleaned carefully with a moist cloth but do not rub! We recommend cleaning by an appropriate specialist.

cleaning Honeycell fabrics

Honeycell fabrics are easy to clean!
Simply soak the Honeycell fabric in approx. 30°C water with a mild detergent.
Rinse the fabric well and compress the cells together by raising the blind, to push water out. The blind must be hung moist and has to dry closed. During the drying process, raise and lower the blind several times to prevent cells sticking together.
Do not iron the blind!

Please note:
Do not clean windows with any chemical products which make direct or indirect contact with the blind. Do not use glass cleaning sprays which contain alcohol. Condensation spots can arise when there is reduced ventilation. We do not take responsibility for any fabric damages caused by cleaning the material or insect excrements. Honeycell fabrics are not designed for outdoor use, therefore, we cannot give any guarantee on fabrics placed in an open or partly glassed roof.

Responsibility:
The above instructions have been drawn up with the utmost care. Nevertheless we cannot accept any responsibility for cleaning results.



Scan QR code and
discover our inspiring
Honeycell collection.

Honeycell BV

Office Haaksbergen
Elektrostraat 7
7483 PG Haaksbergen
Nederland
+31 535 730630
info@honeycell.nl

Office Enter
Vonderweg 48
7468 DC Enter
Nederland
+31 547 85 55 55
info@honeycell.nl

15 november 2019 / 2019-02

honeycell